

LOADLINE

IUOE LOCAL 302

WINTER 2025

**LOCAL 302 MEMBERS
MANUFACTURE, BUILD,
ASSEMBLE, MAINTAIN,
AND OPERATE CRANES
FOR LAMPSON INTER-
NATIONAL; PAGE 14**

Poster inside! Page 26

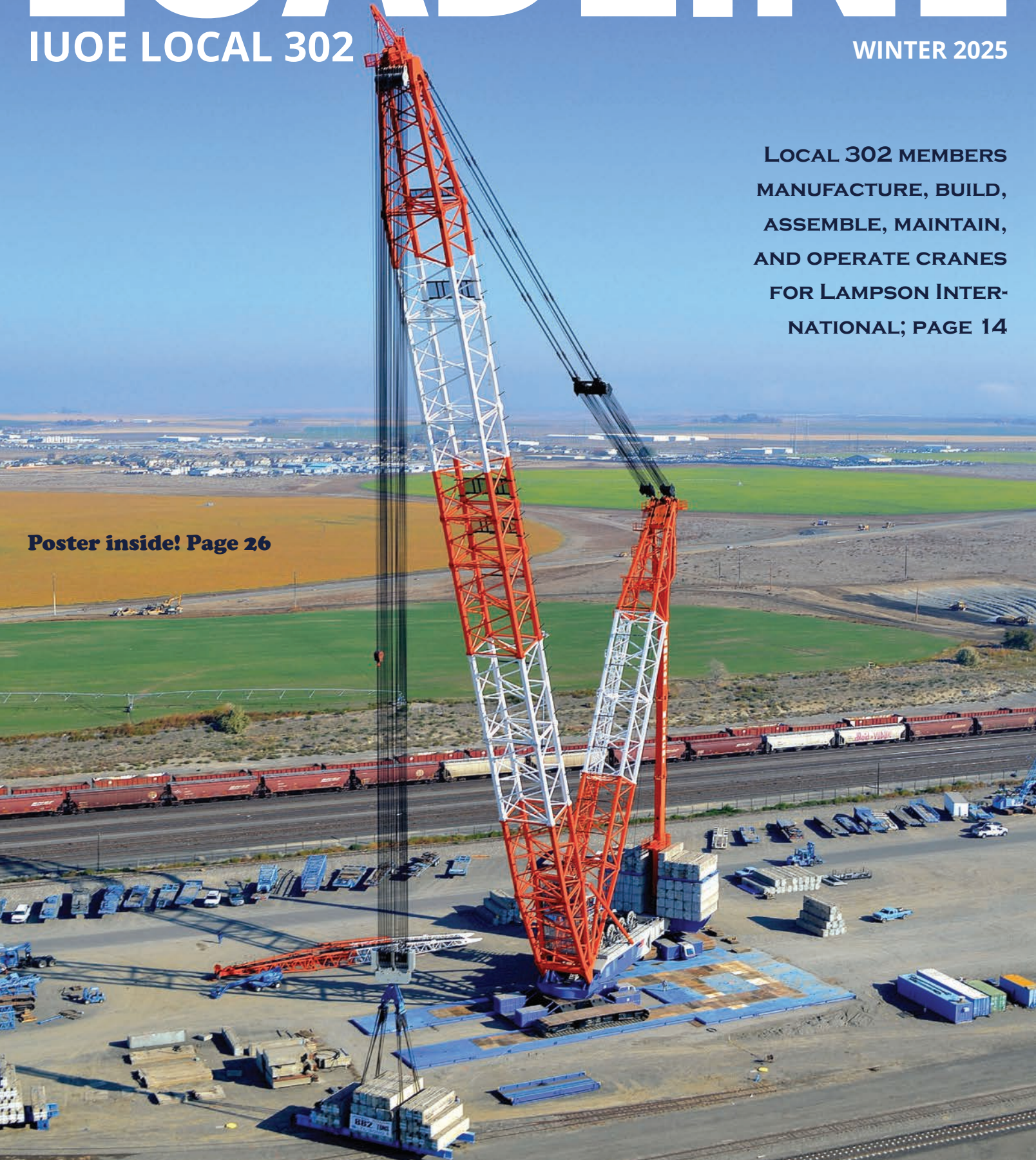


TABLE OF CONTENTS

Office Locations	3
Business Manager's Report	4
Upcoming Construction Work	5
District Reports	6 - 31
Training Center Updates	32 - 37
Member Spotlight	38 - 39
From the Desk of the Dispatchers	40
Local 302 Achievements	42 - 43
Health & Welfare	44
Safety First	45
Congratulations Retirees	50
In Memoriam	50
District Meeting Schedule and Calendar	51
Training Center Locations	51

The Loadline is the official publication of the International Union of Operating Engineers Local 302 and is published multiple times throughout the year. The Loadline is mailed without charge to all members of IUOE Local 302 in good standing. Members, call Local 302 to ensure your mailing address is up to date: 1-800-521-8882.

Send comments, questions, or suggestions for the Loadline to mainoffice@iuoe302.org. POSTMASTER: Send address changes to Address Change, 18701 120th Avenue Northeast Bothell, WA 98011. Check out the Loadline online at www.IUOE302.org.

Visit: www.IUOE302.org

Follow us: Facebook, Instagram, LinkedIn



@IUOELocal302

IUOE LOCAL 302 OFFICERS



DAREN KONOPASKI

Business Manager,
First International Vice President



SEAN JEFFRIES

President



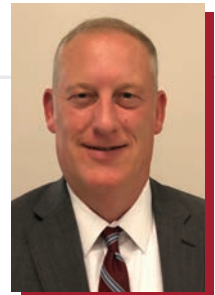
JASON ALWARD

Vice President



LAKE WILLIAMS

Treasurer



JACOB H. BLACK

Recording-Corresponding-
Financial Secretary

EXECUTIVE BOARD

Corey Baxter, Shane Linse, Jeff Frazier



**OPERATING
ENGINEERS**
LOCAL 302

ON THE COVER

An LTL 3000 crane can lift 3000 tons, and the boom is about 300 feet long; Local 302 members manufacture, build, assemble, maintain, and operate cranes like this for Lampson International, Tri-Cities, WA; photo courtesy of Lampson International; read more on p. 14

OFFICE LOCATIONS

DISTRICT 1 – BOTHELL, WA

18701 120th Ave NE Bothell, WA 98011

Phone: 425-806-0302

Fax: 425-806-0030

Toll-free: 1-800-521-8882

Daren Konopaski, Business Manager,
First International Vice President

Jacob H. Black, In-House Counsel,
Recording-Corresponding-Financial Secretary

Bob Franssen, Field Representative
Gabe Schoenfelder, Field Representative

Dean Stoneburner, Field Representative

Dave Padon, Field Representative

Mark Allard, Field Representative

Bill Albin, Field Representative

Rick Sowa, Dispatcher

Levi Johnson, Dispatcher

DISTRICT 2 – BELLINGHAM, WA

1700 N State St Bellingham, WA 98225

Phone: 206-251-5399

Tony Zempel, Field Representative, Conductor

DISTRICT 3 – SILVERDALE, WA

9301 Linder Way NW Silverdale, WA 98383

Phone: 360-307-0557

Eric Arntson, District Representative

DISTRICT 4 – ELLENSBURG & WENATCHEE, WA

403 S Water St Ellensburg, WA 98926

Phone: 509-933-3020

Sean Jeffries, District Representative, President

DISTRICT 5 – TRI-CITIES & SPOKANE, WA; POCATELLO & BOISE, ID

2637 W Albany Ave Kennewick, WA 99336

Phone: 509-545-1811

Russell Walker, Field Representative
Doug Donley, Field Representative, Dispatcher

510 S Elm Spokane, WA 99201

Phone: 509-624-5365

Carl Cope, Field Representative
Kaylan Rogers, Field Representative, Dispatcher

456 N Arthur Ave Pocatello, ID 83204

Phone: 208-232-8492

Brandon Tanzey, Field Representative

Melissa Williams, Dispatcher

225 N 16th St Suite 211 Boise, ID 83702

Shane Linse, Field Representative, Executive Board

DISTRICT 286 – AUBURN, WA

18 E St SW Auburn, WA 98001

Phone: 253-351-9095

Anthony Frascone, District Representative, Trustee

Jeff Frazier, In-House Counsel, Executive Board

Bryan Raby, Field Representative, Organizer

Ryen Young, Field Representative

Larry Kratz, Field Representative

Shelly Filippi, Field Representative

Jim Gower, Field Representative

John West, Field Representative

Oumar Diallo, Field Representative

Dacia Burley, Field Representative

DISTRICT 6 – ANCHORAGE, AK

4001 Denali St Suite A Anchorage, AK 99503

Phone: 907-561-5288

Jason Alward, District Representative, Vice President

Jamie Mack, Field Representative

Bill Sims, Field Representative, Trustee

Nathan Hall, Field Representative

Matthew Theissen, Dispatcher

DISTRICT 7 – FAIRBANKS, AK

3002 Lathrop St Fairbanks, AK 99701

Phone: 907-452-8131

Lake Williams, District Representative, Treasurer

Crystal Tidwell, Field Representative, Auditor

Ronnie Brunty, Field Representative

Connor Gerlach-Ryan, Field Representative

Christina McDermott, Dispatcher

DISTRICT 8 – JUNEAU, AK

9309 Glacier Hwy Bldg A Suite 105 Juneau, AK 99801

Phone: 907-586-3850

Corey Baxter, District Representative, Executive Board

Alison Dempsey-Hall, Public Relations and
Communications Manager

NEW OFFICE
LOCATION



BUSINESS MANAGER'S REPORT

As you read this edition of the Loadline you'll notice highlights of the impactful work our members do across Washington, Idaho, and Alaska.

You'll also read how members can get the most out of their membership. For example, the Dispatchers' article "Hir-

ing Hall Expectations" (see page 40). The theme here is how we can all be engaged, dedicated union members.

There is no time in recent history this has been more important. As predicted, the new presidential administration is quickly making anti-labor moves. On Monday, January 27, 2025, Trump ousted top U.S. National Labor Relations Board (NLRB) leaders. And, if history is any indication of the future labor will continue to see more attacks — attacks against the funding of our projects, against agencies that employ public employees, against pro union positions on the NLRB, against pensions, against collective bargaining agreements, and more.

Now is not the time to focus on social media debates or sensational news stories. Now is the time to come together in solidarity and recognize the good things that come from being a union member. Whether it's the annual holiday parties or community events like the Shine and Show held at the Bothell Hall (check out photos

from the holiday parties on page 46 and an invite to the Shine and Show on page 48). Also, upcoming construction projects that put our members to work (see page 5).

On the IUOE leadership front, at the annual winter meeting General President James Callahan announced his retirement, and John Downey was elected to take his place. You can read more on the International's website at www.IUOE.org.

As we continue to navigate changes as they come, let's stay united around the things we value: training opportunities, collective bargaining rights, access to jobs and protection of our benefits. I want to thank you for your commitment to this union, and protecting and advancing union rights.

In Solidarity,

Daren Konopaski
Business Manager and
International First Vice President



Local 302 Business Manager Daren Konopaski, on the left, with staff standing to the right, speaks at the 2024 Bothell Hall holiday party

UPCOMING CONSTRUCTION WORK

DISTRICT 1

- State Route 509 Stage 2
- Tahoma National Cemetery
- WSDOT's Portage Bay/Roanoke Lid Replacement
- Swedish Hospital
- I-5, Yesler Way to Northgate Way
- Urbanize Seattle apartment building
- Sound Transit Stride bus rapid transit
- Port of Seattle Terminal 5 Container Yard Expansion
- King County Coal Creek sewer upgrade
- Army Corps of Engineers Howard Hanson Dam additional water storage fish passage facility project

DISTRICT 2

- Burlington/Sedro-Woolley pipeline project
- Fish culvert projects

DISTRICT 3

- Port of Grays Harbor improvements
- Dry dock at Puget Sound Naval Shipyard
- Bremerton Circuit of the Northwest
- Multiple projects coming up at the Naval Submarine Base Bangor in Silverdale
- Fish barrier projects across District 3 until 2030

DISTRICT 4

- Central Washington data centers, East Wenatchee and Malaga
- I-90 Snoqualmie Pass project
- Confluence Parkway project, Wenatchee
- WinCo Foods Inc. Distribution Center project, Ellensburg
- Nelson Dam phase 2, Yakima
- Lake Cle Elum Dam Hatchery project
- I-90 Vantage Bridge project

DISTRICT 5

- Horse Heaven Wind Project
- Rockwool
- Atlas Agro/Pacific Green Fertilizer Plant
- Hop Hill Renewable Power Project
- Cereza Solar Project
- Wautoma Solar
- Wallula Gap Solar Project
- Columbia Generating Station at Hanford site starting an outage

DISTRICT 6

- Port of Alaska
- Cooper Landing Bypass
- Kenai Bluff stabilization
- Seward Port dock

DISTRICT 7

- Deadhorse Airport
- Richardson Highway passing lanes
- Richardson Highway interchange North Pole
- Alaska Highway Mile Post 1235-1268

DISTRICT 8

- Haines Highway Mile Post 20-25
- St Paul Harbor dredging project
- Skagway State Street
- Bridged Cove Pipe
- Lawson Creek Road
- Ketchikan Tongass Highway
- F Street – 8th Street, Juneau
- Eyelet Court, Juneau
- Popular Avenue, Juneau
- Waydelich Creek

Contact your Field Representative
for more information.

DISTRICT REPORT

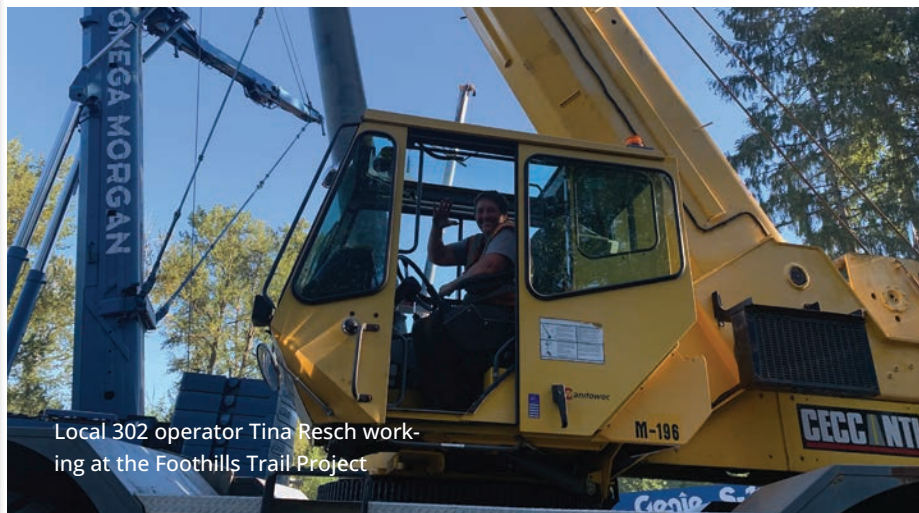
1

The completed Foothills Trail Project bridge;
photo Courtesy of King County Department of
Natural Resources and Parks

**New bridge
over White
River connects
popular 22-mile
Foothills Trail
from Buckley
to Enumclaw**



Local 302 operator Cleo Majette
working for AAA Contractors at Foot-
hills Trail Project



Local 302 operator Tina Resch work-
ing at the Foothills Trail Project

In September 2024 trail enthusiasts celebrated the opening of a new bridge across the White River that extends the popular Foothills Trail to 22 miles.

The 572-foot weathered steel bridge completes the Foothills Trail, connecting 280,000 residents, schools, business districts, and civic centers while offering scenic views of Mount Rainier.

The trail runs along the Carbon River, passing through farmland and forestland.

In addition to connecting Enumclaw, Buckley, South Prairie, Orting, and Puyallup the new bridge offers an alternative emergency route for pedestrians and vehicles if State

Route 410 across the White River is damaged during a catastrophic event.

Local 302 operators performed the following work on this \$16 million capital project: drilling for concrete columns, shaping soils for remediation, taking the habitat back to its natural state, building bag walls for an elevated walking/biking pathway, and hoisting the bridge and its elements into place.

According to Pierce County's project website future plans include connecting the trail to Puyallup's Riverwalk Trail and the Interurban Trail.



Local 302 members setting falsework for the elevated walking/biking pathway of the Foothills Trail Project

DISTRICT REPORT

2

Diablo Dam emergency trash rack repair

Local 302 crane operator Michael McGarry and oiler Eli Pruett working for Barnhart Crane at the Diablo Dam in Whatcom County, WA





Diablo Dam, Whatcom County, WA; photo courtesy of J.F. Brennan Company, Inc.

The Diablo Dam is one of three dams along the upper Skagit River in Whatcom County, Washington and is part of the Skagit River Hydroelectric Project that supplies Seattle with some of its power needs.

According to Seattle City Light, the dam was built in Diablo Canyon, a gorge of solid granite with vertical walls rising 160 feet (49 m) from the riverbed. Construction was completed in 1930, and the dam began generating electricity in 1936. The result was a power-generating dam that holds a reservoir known as Diablo Lake.

In February 2022, one of the power generation turbines went offline. After multiple investigations, a large piece of concrete dislodged from the intake structure was discovered and found wedged in between the turbine and the penstock walls. Large debris material was also discovered to have built up on the outside of the trash racks from 125 feet to 60 feet of depth, and four feet to 60 feet thick from top to bottom.

Working for J.F. Brennan Company, Inc. Local 302 opera-

tors were part of the team to address these critical issues. Initially, Ballard Marine Construction divers got to work removing the debris material from the face of the intake structure and removing old trash rack sections in very cold, deep water. While cleaning the debris some interesting artifacts were discovered including an old wooden tape measure!

Local 302 operators worked around the clock to fulfill dredging and deep underwater lifts. Shout out to Nathan Murray, Justin Pendergrast, Michael McGarry, and apprentice Eli Pruett for their work on this project. This dam now has replaceable trash racks which will help keep debris from reaching the turbines which are critical to long term production of electricity.





Local 302 operators working on a fish barrier project in Sequim, WA

YOU play a role in road and highway work zone safety

Now that we are in the winter season and find ourselves navigating through the difficult driving conditions it can create, it's important to talk about making safety a top priority. Operators in road and highway work zones are spouses, parents, children, siblings and friends — and they all deserve to go home safe at the end of their shift.

Crews work while traffic speeds by just feet or inches away. They work to keep all travelers safe, whether it's repairs or new construction. Far too many have had close calls or injuries. Others have been killed on the job. They deserve our respect and extra attention.

We work hard to keep our members safe with equipment and training. We also need the traveling public's help to keep everyone on the road safe.

Work zone safety tips

We ask all drivers in work zones to:

- **Slow down** — drive the posted speeds, they're there for your safety.
- **Be kind** — our members are out there helping to keep you safe and improve the roadways.
- **Pay attention** — both to workers directing you and surrounding traffic; put your phone down when behind the wheel.
- **Stay calm** — expect delays, leave early or take an alternate route if possible; no meeting or appoint-

ment is worth risking someone's life.

Drivers generally don't think they are at risk in work zones. They're wrong. While these statistics apply to Washington state, they represent work zone safety issues across the rest of the country.

- Washington state averages almost 689 highway work zone injuries each year.
- Almost 95 percent of the people injured or killed in work zone collisions are drivers and their passengers.
- The top three causes of work zone crashes are following too closely, speeding, and distracted/inattentive driving.

Road crews' lives are on the line



Top three causes for 2023 work zone collisions:

Following too closely



Excessive speed



Inattention/distracted driving



2X THE FINE!

Traffic fines are double in work zones



95%

of people hurt in work zone collisions are...





Photo below: Development site of WinCo Foods Inc. distribution center in Ellensburg, WA; photo courtesy of Advantage Dirt Contractors

WinCo Foods moves forward on massive grocery distribution center in Ellensburg

The anticipated five-parcel, 1 million-square-foot grocery distribution center project west of Anderson Road has begun.

WinCo Foods Inc., a privately held and majority employee-owned U.S. supermarket chain based out of Boise, Idaho, is establishing a distribution center within the City of Ellensburg limits. The facility is meant for logistics, not consumer shopping.

Working for Advantage Dirt Contractors, Local 302 members have begun site work for the project using an estimated 400,000 yards of imported rock to fill and compact the area to raise the building elevation. They will also install the utilities.

Working for Keller North America Local 302 members are doing ground improvements drilling with Continuous Flight Augers for rigid inclusions

to support the foundation and slab.

Being a privately funded project, information about contractor selection for future phases of the project is very limited, but we hope Local 302 signatory contractors are chosen to provide more job opportunities for members.



Local 302 members Matthew Campbell operating the push CAT, and Jonny Duncan operating the scraper while loading up on the stockpile of imported crushed rock to place on the Winco Foods Inc. distribution center building pad in Ellensburg, WA; photo courtesy of Advantage Dirt Contractors



Local 302 members working for Keller North America doing ground improvements drilling with continuous flight augers for rigid inclusions to support the foundation and slab of the new Winco Foods Inc. distribution center in Ellensburg, WA; photo courtesy of Keller North America

DISTRICT REPORT

5

**Local 302
members are
the founda-
tion of Tri-Cities
crane company,
Lampson
International**

Check out the
Member Spotlight
on Lampson Inter-
national retiree Bud
Huntley on page
38 and a poster on
page 26!

Local 302 Steward Dan Phelps does maintenance
welding at Lampson International, Tri-Cities, WA

Lampson International has been a worldwide leader in the heavy lift and transport industry for over 70 years.

Originally starting as a small drayage company in the Tri-Cities, Washington area, they quickly grew into one of the most innovative and respected providers of crane equipment and full-service rigging in the United States and abroad.

Lampson provides services including conventional crane rentals, extreme capacity lift and transport engineering, equipment transport, and more. Their massive specialty cranes lift the heaviest of loads for the biggest projects.

Lampson also manufactures crane

and transport equipment in addition to custom heavy lift rigging gear for its own use and for sale to the construction industry.

Over 51 Local 302 members manufacture, build, assemble, and maintain all aspects of the cranes and heavy haul equipment for Lampson International:

- Mechanics assemble and maintain all the hydraulic and computerized electrical systems
- Operator machinists build the industrial size pins and bushings throughout the crane; they also transform engineered drawings to the cutting table to become functional pieces of the cranes
- Operator welders build and weld the booms that reach hundreds of feet into the air

- Crane operators work simultaneously together and are in constant communication to maneuver the enormous cranes
- Truck fleet mechanics keep all the heavy haul trucks in prime working order to assist in the transportation of cranes across the continent

Local 302 members are asked to travel around the country and across the world to assemble, operate, maintain, and disassemble cranes.

As the skill behind the operations, Local 302 members provide excellent service wherever the job site may be.

Report continued on the next page



Local 302 member Eric Kuh operates a LTL 1600 Transi-Lift to construct the Duportail Bridge in Richland, WA; photo courtesy of Chris Masagatani

DISTRICT 5 REPORT CONTINUED



Left to right: Local 302 machinists Tony Orozco and Bill Reser work for Lampson International, Tri-Cities, WA



Local 302 member Esteban Lopez assembling crane cabs for Lampson International, Tri-cities, WA



Local 302 member Rick Young operating the computerized cutting table, Lampson International, Tri-Cities, WA



Local 302 member Anatoliy Shabak operating a metal break, Lampson International, Tri-Cities, WA



Local 302 field mechanics Roger Hoover, Stepan Shelestovskiy, and Gary Marcotte, Lampson International, Tri-Cities, WA

Local 302 members worked on modifications to the Vogtle Electric Generating Plant for Lampson International in Waynesboro, Georgia; photo courtesy of Southern Company





Local 302 operator Marcus Lobe moving armor rock under water for the Bird Creek bridge replacement project outside of Anchorage, AK

Bird Creek railroad bridge replacement ensures safe and reliable train operations

Heading south out of Anchorage, Alaska, a railroad parallels the Seward Highway, that is designated as a United States Department of Agriculture Forest Service Scenic Byway, an Alaska Scenic Byway, and an All-American Road.

The highway and railroad skirt the base of the Chugach Mountains and the shore of Turnagain Arm, where it's common to see beluga whales, Dall sheep, waterfalls, and eagles. Both the Seward Highway and railroad serve as big economic and tourism thoroughfares.

Flowing into Turnagain Arm approximately 20 miles south of Anchorage, is Bird Creek which runs right under the Seward Highway and an aging railroad bridge. In 1996, a legacy steel-and-timber railroad bridge at this location was replaced with a repurposed post-World War II pony truss and associated trestles. These structures are nearing the end of their useful lives.

The Alaska Railroad Corporation has deemed it time to replace the aging Pratt style 123-foot pony truss span and two 14-foot timber trestles, with a 125-foot through plate girder bridge.

A team of Local 302 operators from Bristol Construction Services and Swalling General Contractors are working together to perform these tasks:

- Building access to the rail bridge down the steep slopes from the Seward Highway
- Constructing a pad for the crane to work from
- Moving and placing new and old armor rock to help protect the riverbank from erosion, along with piling to support the new bridge and its foundation
- Placing the new bridge girders and support system for the railroad tracks
- Removal of all access roads and work pads after project completion and bringing the area back to original grade

The entire project must be performed in the winter months which presents cold icy weather, rubble ice, and tide surges within Turnagain Arm. Local 302 operators are doing all these tasks and more safely, while working within a very narrow easement between the busy Seward Highway and the existing railroad tracks.

The Bird Creek railroad bridge replacement is critical to ensure the safety and reliability of passenger and freight train operations along this important scenic byway.

Report continued on the next page



Sunrise where the Seward Highway and the railroad bridge cross over Bird Creek with Turnagain Arm rubble ice in the background

DISTRICT 6 REPORT CONTINUED



The black bear Bird Creek bridge inspector,
Bird Creek, Turnagain Arm, AK



Local 302 member and crane operator Joe
Johnson working on the Bird Creek bridge
replacement, Turnagain Arm, AK



Future Bird Creek railroad bridge girders
waiting to be placed, Turnagain Arm, AK

DISTRICT REPORT

7

Improving airports in rural Alaska

The Chalkyitsik Airport after resurfacing, dust palliative, and a new segmented circle were completed by Local 302 members; photo courtesy of Ariana Noel, Brice Inc.

Local 302 signatory contractor Brice Inc., based out of Fairbanks, Alaska specializes in logistically complex civil construction jobs in rural and remote locations across the state. One of their primary areas of focus are airport improvements.

Aviation is a way of life in America and nowhere is this truer than in Alaska. It provides the backbone of daily commerce to many communities in the state, including the delivery of food and lifesaving supplies, inter-city and inter-village transportation, emergency medical evacuations, and daily commuting.

Given this, state and federal funding has invested in airport improvement projects especially for rural villages.

Brice Inc. has specialized knowledge in what it takes to “mobe-up” (mobilize) the necessary resources like equipment, materials, and infrastructure to these remote and challenging locations. With a particular focus on leaving the villages better than when they arrived, Brice invests in things like improving roads and driveways, as well as renovating housing, and leaving heavy equipment and materials the villages can use once the projects are complete.

Most importantly, Brice looks to hire village residents to work on the airport improvement projects. After signing up as IUOE Local 302 members, residents can work on other Local 302 projects like on the North Slope which allows them to travel for work and return home to their community and culture to preserve their way of life.

Local 302 members continually provide top operator skills in these remote and challenging locations to get the job done. Here are a few examples.

Report continued on the next page

DISTRICT 7 REPORT CONTINUED



Local 302 members dumping, placing, and compacting CASC material for the new runway surface at the St. Mary's Airport; photo courtesy of Malinda Malenfant, Brice Inc.


St. Mary's Airport Improvement Project

Saint Mary's and the surrounding communities served by the airport aren't connected to the Alaska State Highway system. Freight is barged to Saint Mary's in the summer months or flown into the airport year-round.

The continued safe operation of Saint Mary's Airport is critical. Saint Mary's airport is one of the few in the region that is large enough for the Lynden C130 to utilize. This allows the airport to serve the surrounding villages with larger, cheaper, and more consistent freight items not available from smaller planes. The airport is a hub for residents, visitors, bypass mail, freight, medical emergencies, and sport fishing and hunting.

Working for Brice Inc., Local 302 operators completed the following work to improve safety at the Saint Mary's Airport by upgrading existing aviation facilities to meet current Federal Aviation Administration standards:

- Excavate existing runway surfaces
- Resurface both runways, taxiways, and all apron surfaces
- Unload barges of surface material from Marshall, AK
- Mine subbase material from existing Pitka's Pit
- Replace the airport lighting and navigational aids
- Ditch roughly 9,000 linear feet of v ditch for rain and snow melt drainage
- Maintain approximately 10 miles of haul routes

An aerial photograph showing a large-scale construction project at Chalkyitsik Airport. Several yellow heavy machinery vehicles, including graders and compactors, are visible working on a wide, light-colored gravel or sand surface. A large, dark, irregularly shaped area, possibly a pond or a large pile of material, is in the center. The surrounding landscape is rugged and appears to be in a remote, northern location.

Chalkyitsik Airport Improvement Project

Chalkyitsik means “fish hooking place” and is a traditional Gwich’in Athabascan village with a subsistence lifestyle. With a population of about 70 residents, this town is located in the northeast part of Alaska on the Black River about 50 miles east of Fort Yukon and is a subarctic climate with short, warm summers and bitter, cold winters.

The airport improvement project was needed to improve safety and accessibility for this remote village. Working for Brice Inc., IUOE Local 302 operators completed the following work:

- Dis-assemble and re-assembled all equipment flown to the project
- Develop a new material site from raw land
- Remove unsuitable material from the runway, taxiway, and apron
- Resurface the runway, taxiway, and apron
- Rehabilitate the airport lighting system, electrical building, and improve airport drainage
- Replace the segmented circle and wind cones
- Build a pad with a subgrade cooling system for a new snow removal equipment building

Local 302 members work on building threshold pads, a last-minute design addition to the runway at Chalkyitsik Airport; photo courtesy of Ariana Noel, Brice Inc.



Report continued on the next page

DISTRICT 7 REPORT CONTINUED

The Russian Mission airport runway after emergency repairs were completed by Local 302 members; photo courtesy Ariana Noel, Brice Inc.



Russian Mission Airport Emergency Repairs

Alaska's Russian Mission airport sits about 30 feet above the Yukon River, low enough that a spring 2023 destructive winter ice jam flood inundated the airstrip that provides a crucial connection to the outside world.

Without the airport about 400 residents were stranded without fresh food, mail, or a way in or out.

Local 302 members worked quickly to repair the runway damage caused by the spring flooding.

Working for Brice Inc., Local 302 op-

erators completed the following work to make emergency safety repairs:

- Remove flood debris from the airport safety zones
- Remove flood-deposited unsuitable material from runway and taxiway
- Offload all gravel from barges
- Resurface the runway and taxiway

Marshall Airport Improvements

Marshall is a traditional Yup'ik village located in southwest Alaska on the Yukon River. The population of approximately 490 people mostly live a subsistence and fishing-related lifestyle. Marshall is accessible by both air and water. There are no roads that connect it to other communities.

Working for Brice Inc., Local 302 operators completed the following work at the Marshall Airport:

- Rehabilitate the existing runway, taxiway, and apron
- Rehabilitate and widen the airport access road to a consistent 18 foot width
- Replace the airport lighting, segmented circle, and navigational aids
- Rehabilitate the existing maintenance building and pad



Local 302 members operate a D6 dozer placing subbase material and an A45 rock truck at the Marshall Airport improvement project; photo courtesy of Matthew Scarboro, Brice Inc.

DISTRICT REPORT

8

Local 302 members work to back fill at the Jordan Creek Culvert Replacement Project; photo courtesy of Local 302 member Michael Corcoran

Juneau's emergency Jordan Creek culvert replacement project

One of the deteriorated Jordan Creek culverts running under Glacier Highway; photo courtesy of the Alaska Department of Transportation & Public Facilities

The sink hole on Glacier Highway in Juneau, Alaska before the deteriorated culverts were discovered underneath; photo courtesy of the Alaska Department of Transportation & Public Facilities

In late July 2024, the Alaska Department of Transportation & Public Facilities' Maintenance & Operations team patched a void in the roadway on Glacier Highway in Juneau, Alaska. But by August 8, a new sinkhole signaled deeper issues.

Investigations revealed two massive culverts — originally installed in 1983 to convey Jordan Creek under Glacier Highway — had reached the end of their life. Their structural failure resulted in closing the highway and fast-tracking an emergency replacement project.

Working for Admiralty Construction Inc. Local 302 operators completed all the heavy equipment work. (Shout out to Admiralty Construction owner, Andrew Campbell, who is a

second generation Local 302 member!)

The failing culverts were replaced with two new 8-foot-diameter, 180-foot-long culverts designed to last for decades to come. These culverts handle up to 10 million gallons of water daily in a sensitive waterway.

From managing utilities and diverting water flow to ensuring compliance with environmental regulations, this project required extensive collaboration to protect this environmentally sensitive area.

We're proud of our Local 302 operators' work to restore this important urban arterial to keep the Juneau community moving.

Report continued on the next page



Photo courtesy of Lampson International



OPERATING ENGINEERS

LOCAL 302

LOCAL 302 MEMBERS OPERATE MULTIPLE CRANES,
INCLUDING THE LTL -2600, AT THE WASTE TREAT-
MENT AND IMMOBILIZATION PLANT, ALSO
KNOWN AS THE "VIT PLANT", HANFORD, WA



DISTRICT 8 REPORT CONTINUED

If you ever spot a sudden roadway depression or a potential sinkhole, report it to your state Department of Transportation or the local jurisdiction. It typically indicates problems under the roadway.

Local 302 members paving the Jordan Creek culvert replacement project; left to right: topside operator Carl Brenner, screed operator Travis O'Conner, and finish roller operator Ethan Briggs



Local 302 member and mechanic Kevin McQuaid making sure all the dewatering pumps and equipment are running for the Jordan Creek culvert replacement project



Local 302 member Garrett Hoyt getting the pipe ready for installation for the Jordan Creek culvert replacement project

Lakehaven Water and Sewer District is a public utility providing water and sewer services mainly to Federal Way and parts of Auburn, Des Moines, Kent, Milton, Tacoma, and unincorporated King County.

Over 55 Local 302 members work for the District and are part of a team who delivers safe, reliable and high-quality drinking water and environmentally responsible sewer service for these communities.

The water system includes 400 miles of mainline, 22 wells, and 12 storage tanks with an approximate storage capacity of 31 million gallons. The average daily pumping rate is about 10.6 million gallons per day. The sewer system includes 350 miles of mainline, 27 pump stations and two secondary wastewater treatment plants.

Local 302 members lead the operation and maintenance of the entire drinking water and sewer

systems. Everything from wastewater treatment to general plant maintenance, electrical work, upkeep of equipment, underground drinking water and sewer pipes and pumps, janitorial, administrative service, and more.

The sewer system is particularly involved and includes a 6-step process that transforms wastewater to biosolids which are sent to eastern Washington for farming use to restore soil health and provide much needed slow release (non burning) nitrogen.

The remaining water is treated to meet the Environmental Protection Agency and Washington State Department of Ecology standards and then released into the Puget Sound.

Without Local 302 members' work, the water and sewer services would come to a halt.

Report continued on the next page

Lakehaven Water and Sewer District delivers fundamental services to south Puget Sound



From left to right: Local 302 members Tom Crawford, Bryan Ditzler, and Jeff Armfield in the Lakota plant wastewater treatment lab at the Lakehaven Water and Sewer District

DISTRICT 286 REPORT CONTINUED



Local 302 members at the Lakehaven Water and Sewer District headquarters, standing in front of a historical clock that was salvaged from the Federal Way "German Town Center" or "Santa Fair" and is a special historical marker for the community



Local 302 member and wastewater operator Brian Steele stands in front of the bio towers which break down organic matter in the wastewater so it can be removed at the Redondo wastewater treatment plant at the Lakehaven Water and Sewer District



Local 302 member Jeff Armfield weighs total suspended solids filters at the Lakota plant wastewater treatment lab, Lakehaven Water and Sewer District



Local 302 member David Hornung adjusts the disc thickener at the Lakota plant, Lakehaven Water and Sewer District

Left to right: Local 302 members Brian Steele and Bryan Ditzler in the primary clarifier which slows down the flow to allow heavier matter to settle to the bottom at the Redondo wastewater treatment plant, Lakehaven Water and Sewer District



Brian Steele in the wastewater treatment pump room at the Redondo wastewater treatment plant, Lakehaven Water and Sewer District



Bio solids ready to be shipped to eastern Washington farms for fertilizer



Local 302 member Ron McCoy who has worked for Lakehaven Water and Sewer District for almost 50 years standing next to the press that is used to make bio solids (fertilizers)

TRAINING CENTER UPDATES

ELLENSBURG, WA TRAINING CENTER



IUOE Local 302 MEMBERS AND APPRENTICES: Take advantage of online learning today!

The Ellensburg Training Center, in conjunction with the IUOE National Training Fund, have developed online training to improve member/apprentice knowledge on a variety of subjects including grading, crane operation, commercial driver's license, CPR, and more.

Taking online classes reduces the need to drive to the Ellensburg Training Center and are great tools to study for upcoming certifications or brush up on skills you haven't used in a while. For some classes you may need to attend part of the training in person.

Who can take trainings? All apprentices and members in good standing, who have the required training contribution hours

When are the trainings offered? Year round; Training managers will keep track of the member progress

How do members sign up? Email Jerry Bennett, Safety and Health Director, JBennett@oetraining.com

Visit www.oetraining.com/ for more information or scan this QR code:



Are you a Washington or Idaho resident interested in operating engineers apprenticeship? IUOE has two training centers to serve you:

- **Ellensburg, WA:** Applications will be accepted April 1 through November 7, 2025. To learn more visit www.oetraining.com or call 509-968-3203. If you currently live in western Washington, you must apply to the Ellensburg training center.
- **Spangle, WA:** Applications will be accepted January 1 through December 31, 2025. To learn more visit www.wsopen.org or call 509-235-9393. If you currently live in eastern Washington or Idaho, you must apply to the Spangle training center.

Questions about which location to apply to? Call the training center closest to you.

ONLINE TRAININGS OFFERED*

LOCAL 302 HOISTING & PORTABLE

Basic Equipment

This course may take 40-70 hours to complete, depending on the assigned activities. You'll learn to identify core equipment and key trade nomenclature. You will also learn about communication processes, safety awareness, rigging, signaling practices, maintenance and mathematic concepts.

Seat Time: 40-70 Hours

Basic Maintenance

This course may take 40-70 hours to complete, depending on the assigned activities. You'll learn about PPE used in maintenance processes, safe practices, hand tools, core components, and preventative maintenance.

Seat Time: 40-70 Hours

Construction Equipment Nomenclature

This 5-hour course provides the perfect introduction to the many varieties of construction equipment: what each type does, how it works, and the many components and attachments that help it function.

Seat Time: 5 Hours

Hand Tools and Fasteners

Tools don't make the repair person, but they help. Knowing how to use and care for them will put you ahead of the crowd. This 2-hour course examines the basic types, care, and safe handling of various hand tools.

Seat Time: 2 Hours

Hydraulics

This 12-hour seminar-style course helps 2nd-year apprentices learn more about hydraulics through a curriculum that consists of an instructor manual, presentations, and workbooks.

Seat Time: 12 Hours

**Training courses may change, the latest courses are live on the training website*

Online training list continued on the next page

ONLINE TRAININGS OFFERED*

LOCAL 302 SAFETY

Adult First Aid, CPR and AED - If you want to renew your CPR card, you can attend the online portion and work at your own pace to complete the required video training and final test and then schedule their practical when it is convenient for you. This training program's purpose is for participants to gain or improve knowledge and skill proficiency in adult first aid and/or conventional CRP and AED.

CRANE COURSES

Crane operators could utilize the crane modules to study for their scheduled NCCCO tests and not have to drive to one of the union halls to get the materials.

Mobile Crane Training

Crane Operator Training

Based on the 2017 Crane Operator Manual, this 31-module course covers the operation of a crane.

Tower Cranes

Designed and developed by IUOE NTF, this 40-hour course will provide instructor materials for the knowledge and skills necessary for tower crane operation. Materials are provided to teach learners the important skills of assembly and dismantling techniques, safe operating techniques, applications, and maintenance procedures for tower cranes. A strong emphasis is placed on maintaining safe working conditions by following industry standards and regulations.

Seat Time: 40 Hours

COMMERCIAL DRIVER LICENSE (CDL) TRAINING

Entry Level Driver Training Course

An FMCSA Compliant Entry Level Driver Training Program.

CDL Pre-Trip Inspection Test Prep

This 4.5-hour course will help prepare you for the inspection portion of the exam. Activities include video explanations, component naming practice, games, guided answer rehearsals for evaluator questions, and more.

Seat Time: 4.5 Hours

**Training courses may change, the latest courses are live on the training website*

Online training list continued on the next page

Pre-Operational Inspection

This 4-hour self-paced online course covers equipment maintenance, pre-operative inspections on different systems, operator planning and safety practices.

Seat Times: 4 Hours

GRADE CHECKING

Basic Grade

This course may take 40-70 hours to complete, depending on the assigned activities. You'll learn about core equipment used in the staking process. You'll also learn about communication processes, PPE, and mathematical concepts related to the grade setting process.

Seat Times: 40-70 Hours

Fundamentals of 3DMC by Topcon

This 1-hour course is generously offered by Topcon Positioning Systems. Topics include Phases of a Job Site and RTK GNSS Control Systems.

Seat Time: 1 Hour

Fundamentals of GNSS by Topcon

This 2-hour course is generously offered by Topcon Positioning Systems. Topics include Introduction to GNSS Positioning, Precision GNSS Measurement Techniques and Basic Principles of Geodesy.

Seat Time: 2 Hour

SPANGLE, WA TRAINING CENTER



Entry Level Training Spangle, WA apprentice Everett Callihan operates a loader at the Operating Engineer training center in Spangle, WA

UOE is proud to offer heavy equipment training at the Alaska Operating Engineers Program Center in Palmer, AK. Read on to hear how training and being a union member has made a difference in the life of one of our apprentices.



Local 302 apprentice Cameryn Olson on the 988 loader she's operating for crushing on the Dalton Highway, AK

CAMERYN OLSON

Why did you join the IUOE Local 302?

Growing up, I watched my dad operate heavy equipment and I always knew I wanted to run them myself. After graduating from high school, I participated in a 40-hour heavy equipment training class through the Alaska Works Partnership and that's when I decided I wanted to operate heavy equipment as my career.

What are your favorite things about being in Local 302?

I love the feeling of being part of one big family. Everyone supports one another, and I feel comfortable asking questions when I need to. The fact that I am part of building my home state is amazing, and knowing I have all the support I need to continue to grow year after year!

What is your current job and what do you enjoy about it?

I was contracted out to Cruz Construction Inc. in December of 2023 and have been with them since.

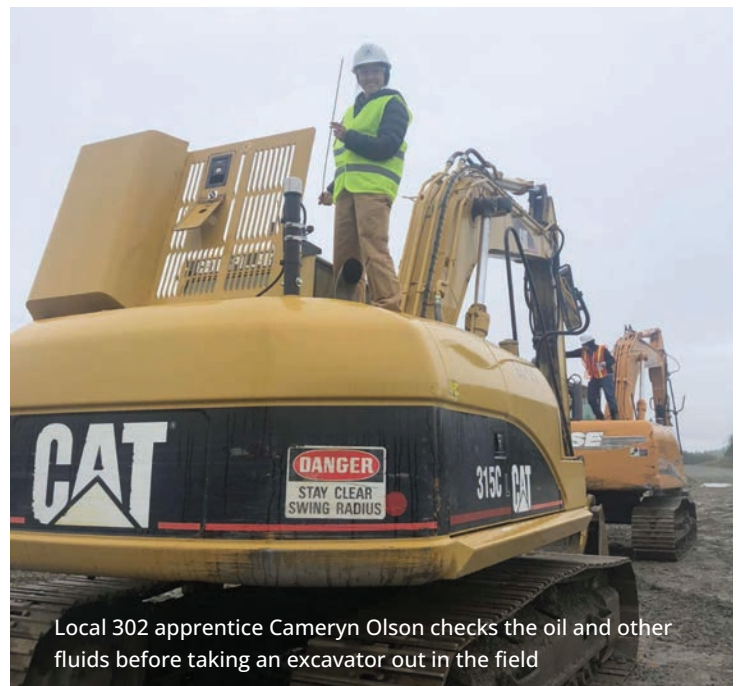
I am currently busy building ice roads on the North Slope from Deadhorse out to the Badami Pad. I am running a loader making ice chips, pushing material, and loading trucks when needed. I think the coolest aspect of this job is each year the roads we build will literally disappear with spring's melt which means nature ensures our job security.

When do you anticipate graduating from the Alaska Operating Engineers training program?

I've been fortunate to have worked over half of my apprenticeship hours already, and I anticipate being able to journey out by the end of summer 2025. I'm in no hurry, though. I absolutely love what I do operating all different kinds of equipment. I love being a woman in the trades, and I'm excited for what my future holds with IUOE Local 302 in Alaska!

What advice would you give to people considering a career in the trades?

My advice would be to not lose focus and don't doubt yourself. Look at me, I did it! The construction trades are a great way to work hard and live a full life.



Local 302 apprentice Cameryn Olson checks the oil and other fluids before taking an excavator out in the field



From left to right: Jason Brandenburg, Franz Bakery, shakes hands with Local 302 Field Representative John West



Robert Freeman, Fred Hutch Cancer Center



Geoffrey Murray, Seattle Children's Hospital



Michael Rae, Seattle Children's Hospital

Congratulations to our stationary engineers for completing the 4-year apprenticeship!

Learn more about furthering your career through stationary apprenticeship at www.IUOE302.org.

Current stationary apprentices: Spring quarter starts April 7, 2025. Registration opens March 1, 2025. Schedules are live on the website.



Braulio "Bayo" Lucatero-Zamora, Local 302 member and stationary engineer at Swedish Medical Center - Ballard, signs up as an apprentice for the Western Washington Stationary Engineers Training Trust with Trust administrative staff Heather Forseth

Stationary members, did you know as part of your contract you may be eligible for journeyman-level training classes or apprenticeship programs?

These opportunities are funded by employers who contribute to

the Western Washington Stationary Engineers Training Trust. Apprentices are only required to purchase books and materials which are reimbursed at 75% upon completion of the course.

BOILER SYMPOSIUM & REFRESHER

**SAVE THE DATE:
JUNE 26 - 27, 2025 AT
THE IUOE LOCAL 302
BOTHELL HALL**



Open to the public, event cost covered for Training Trust members!

The Western Washington Stationary Engineers Training Trust presents the 2025 Boiler Symposium June 26 and 27. Each day, check-in and networking begin at 7:30 a.m. with the event from 9 a.m. to 4 p.m.

Boiler Operators who attend the Symposium and complete the exam will meet requirements for a refresher course. The event is approved by the Bates Technical College Steam Certification Board and the Seattle Steam License Advisory Board.

Registration: \$165 (includes cost of the exam) covers two days attendance, breakfast bites, and lunch.

Registration information coming soon.

MEMBER SPOTLIGHT

BUD HUNTLEY

CRANE TECHNICIAN

TRI-CITIES, WASHINGTON



Local 302 member Bud Huntley stands on the back platform of an LTL 3000 crane about 150 feet up in the air at the Lampson International plant, Tri-Cities, WA

Congratulations to Local 302 mechanic, and steward, Bud Huntley on his retirement! Bud recently retired on December 27, 2024 after working for Lampson International, based out of the Tri-Cities in Washington as a crane technician for 36.5 years.

Why did you join IUOE Local 302? How long have you been a member?

I have been a member for 33 years. I joined because I wanted to work for Lampson International in the Tri-Cities to build and maintain some of the largest cranes in the world. I was also a shop steward for 10 years right up until I retired in December 2024. It was fun to be a shop steward because I got to learn and share about the benefits of being in a union.

What are your favorite things about being a union member?

The pension and health benefits are great. I also really enjoyed learning about different jobs in this field. I traveled a lot as a crane technician for Lampson International and enjoyed meeting other union members around the country.

What's your current job and what do you enjoy about it?

I retired from being a crane technician which was a lot of mechanics type work. I enjoyed doing hydraulic tubing and hose work. Technology advances so quickly you wouldn't believe it. You've got to keep learning to stay on top of it. There is a lot of technical work involving sizes of hoses, crimp settings, and pressure settings so you know which size hose to build.

What are the top things you wish you would've known when you started your career?

Don't settle. Find a job you love to do. It makes for a better overall life.

What advice would you give to people considering a career in the trades?

Learn everything you can and don't hold back. Try all different kinds of jobs until you find one that interests you.

What do you plan to do in retirement?

Travel for fun instead of work! I'd like to take a cruise to Alaska. I'm also looking forward to spending time on hobbies, in particular working on cars where I can put my hydraulic skills to use. For example, power steering uses hydraulics,

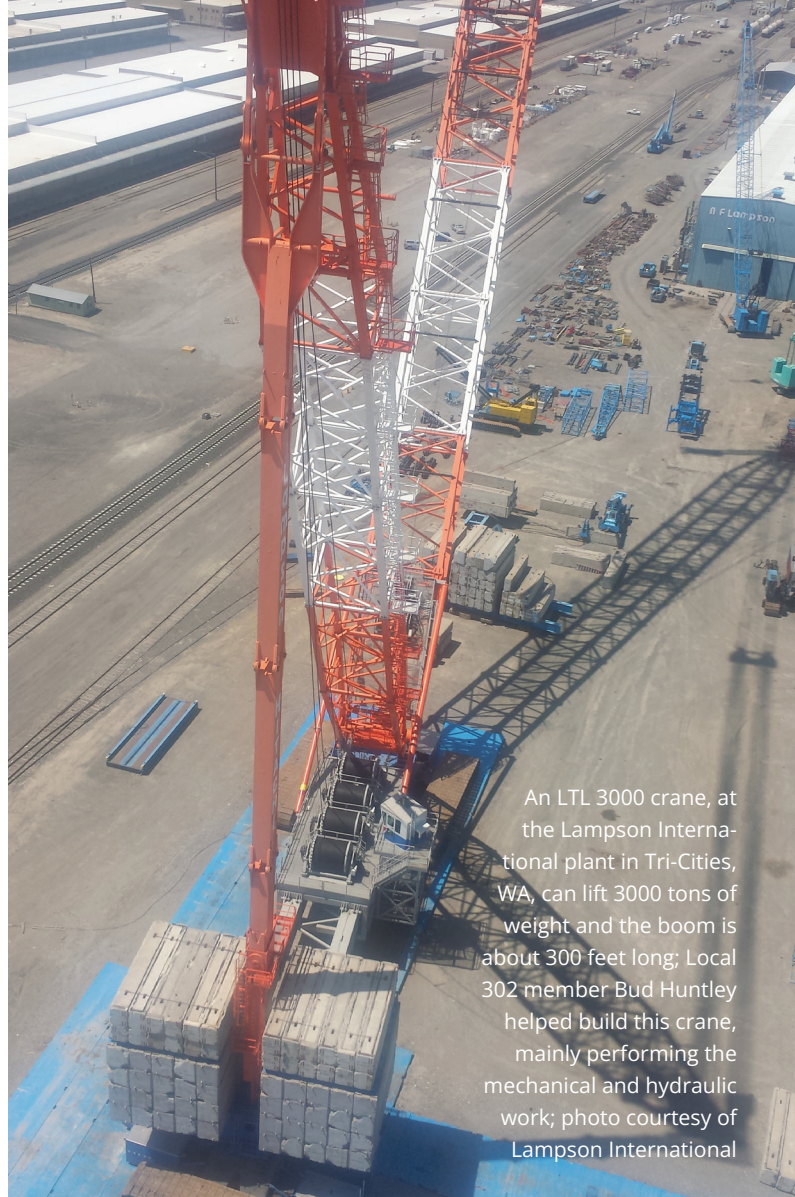
also the hoses that go to the radiator, heater hoses, and brake lines.

Is there a Local 302 member you think we should feature in the Loadline? Email mainoffice@iuoe302.org.





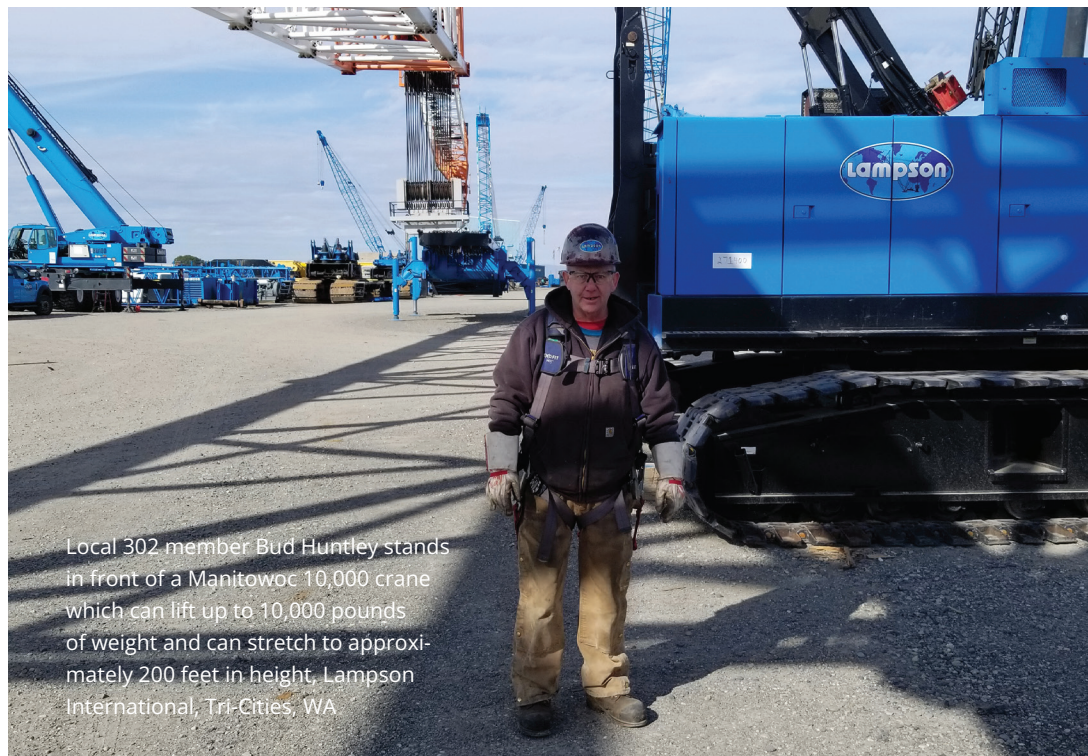
Local 302 member Bud Huntley bending the tubes for grease lines for the injectors of an LTL 3000 crane, Lampson International, Tri-Cities, WA



An LTL 3000 crane, at the Lampson International plant in Tri-Cities, WA, can lift 3000 tons of weight and the boom is about 300 feet long; Local 302 member Bud Huntley helped build this crane, mainly performing the mechanical and hydraulic work; photo courtesy of Lampson International



Local 302 member Bud Huntley checks the fittings of hoses and pumps on one of two engines for an LTL 3000 crane; the two engines run different components on the crane, Lampson International, Tri-Cities, WA



Local 302 member Bud Huntley stands in front of a Maniotoc 10,000 crane which can lift up to 10,000 pounds of weight and can stretch to approximately 200 feet in height, Lampson International, Tri-Cities, WA



FROM THE DESK OF THE DISPATCHERS

IUOE Local 302 Hiring Hall Expectations

As dispatchers, we field questions each day about Local 302 standards. We want to share the main hiring hall expectations which benefit Local 302 membership and registrants who use the referral system. Only when all participants act in the best interest of the union, the membership, and the hiring hall can we meet the high standards set by Local 302. Simply put, with membership/registration comes responsibility.

1. Conduct yourself as an upstanding member of the International Union of Operating Engineers and agree to abide by the Bylaws, the Constitution, and the collective bargaining agreement that you are working under.
2. Pay membership dues on time.
3. Once you accept a dispatch from the hall, confirm the contractor's requested location and starting time. Reporting at the wrong time will be considered a No-Show. If you fail to call prior to the starting time, it will be considered a No-Call No-Show.
4. Report for each shift at the expected starting time or contact your employer in advance of your starting time if you will be late.
5. Report to the job location ready to work and with the proper work clothing, footwear, and personal protective equipment (PPE).
6. Be respectful to your coworkers and refrain from violating all union, Joint Apprenticeship and Training Committee, and contractor harassment policies.
7. Report to your pre-employment drug screening both drug and alcohol free.
8. You are expected to be compliant with your employer's drug and alcohol policies while employed.
9. Have a proper dispatch before reporting to work for a contractor. Do not work any hours without a proper dispatch.
10. Register with the hiring hall to be on the out-of-work list and re-register to maintain your position on the list if not dispatched within 90 days. Failure to follow these procedures can negatively impact your dispatch opportunities and may compromise your status with the state Employment Security Department. Refer to jurisdictional contract hiring hall language.
11. Notify dispatch when returning to work from a layoff for a proper dispatch.
12. If you are employed by a Local 302 signatory contractor, you may not concurrently be on the out-of-work list.
13. It is your responsibility to maintain current skill certifications consistent with the skills related to your dispatch for all hours worked on the job. Updated certifications can be emailed, faxed, or physically turned in, to your respective IUOE Local 302 dispatch office.
14. Immediately inform the dispatch office if any of your certifications expire.
15. If you fail three times to proficiently operate a piece of equipment which is listed on your qualifications, you must test at the training facility. If you fail at the training facility you must request that the skill be removed from your hiring hall records.

AGC and MLAWW Western Washington Master Labor Agreement members, this announcement is for YOU!

BUILD A STRONGER FUTURE

Just like IUOE Local 302, OE Federal is proudly built on strong union values. We understand the unique needs of union members, offering specialized loans and credit cards tailored for your lifestyle. As a member-owned cooperative, our profits go back to you through lower rates and fewer fees, ensuring you get the best value. With deep roots in the union community, OE Federal supports union events and initiatives, embodying the spirit of solidarity. Plus, with our cutting-edge mobile app, you can access your money anytime, anywhere, making your banking experience seamless and convenient.

Members working under **AGC and MLAWW Western Washington Master Labor Agreements** must create an account with OE Federal Credit Union to access their Paid Time Off funds.

Explore OE Federal's banking, loan, insurance, and investment products. We've got IUOE Local 302 covered!

- AUTO -



OE Federal understands how important it is to have a reliable vehicle. Whether you're buying a new car, a used one, or refinancing your current loan, they're by your side.

- HOME -



OE Federal is committed to helping you finance the home of your dreams. Through purchasing, remodeling, or refinancing, they've got your back.

- CREDIT CARD -



Think of OE Federal's Visa STEEL as your trusted partner. Their card options allow you to make flexible payments, build credit, or earn rewards. Plus, you receive exclusive union benefits!

- SAVINGS -



Everyone's saving for something different: a new home, growing family, or safety net for life's surprises. OE Federal believes in the power of savings for what matters most.

- PAID TIME OFF PAY -



Starting January 2025, OE Federal will handle Paid Time Off Pay for eligible Local 302 members. Deposits will be made monthly into OE Federal accounts, with the first one on March 15th, 2025, for January PTO.



OE Federal welcomes IUOE Local 302! Your first Paid Time Off Pay deposit will be on March 15th, 2025. Open your account today to be ready. Scan the QR Code to learn more about your Paid Time Off Pay, account opening, and all OE Federal has to offer.



BANKING

LOANS

INSURANCE



800.877.4444



oefederal.org

Federally Insured by NCUA | Equal Housing Lender

LOCAL 302 ACHIEVEMENTS

MEMBER AND STAFF HIGHLIGHTS

Seattle Public Schools All-Stars: It's their time to shine

Content and photos provided by Seattle Public Schools



Local 302 members are making a positive impact on the communities they serve in Seattle Public Schools (SPS). It's one of the many qualities that make them the first recipients of the new SPS All-Star Award.

If there's one thing **Stacey D'Aberle** knows it's how to find a good bargain. Cedar Park Elementary's daytime custodian spends her weekends scouting yard sales for puzzles and games

for students to play. "She greets students by name, makes sure messes are just memories, and that our school stays clean and inviting," said Mary Fickes, the school's social worker.

D'Aberle has a wacky sense of humor, and she keeps students and staff on their toes with her ever-changing hair color. She is an integral part of what makes Cedar Park a great community.



For the Roxhill Elementary community, **Hakeem Trotter** is more than a custodian and Local 302 member. When he's not keeping the school clean and running smoothly, he's acting as the school's honorary activities coordinator.

Trotter has made a huge impact on the school by creating opportunities for students to connect. During lunchtime, he runs the Kings & Queens Club for 4th and

5th grade students. He has also organized field trips, community potlucks, and generated partnerships with outside organizations to enrich the Kings and Queens.

According to Academic Intervention Specialist Emily Kugisaki, Trotter is the key to keeping the school connected. "He has put volunteer hours into holding space for students to build community and life skills through this weekly lunchtime program."



Local 302 operators move burned boat from water to shore

Photos courtesy of TowBoatUS Puget Sound, Adam Yates

Shout out to Local 302 operators **Dreman De-Feo** and **Conner Wheaton** who assisted with an offshore boat fire recovery.

On December 8, 2024, a dramatic boat fire in Elliott Bay near West Seattle triggered a significant emergency response, involving fire crews, the Coast Guard, and even a Washington State ferry. One person was rescued from the burning vessel by a good Samaritan vessel, according to the Seattle Fire Department.

Working for Pacific Pile & Marine, Dreman operated the crane and Conner was the deck engineer and oiler on the barge that moved the destroyed boat from the water to shore.



HEALTH & WELFARE

ATTEND A HEALTH & WELFARE AND RETIREMENT BENEFIT MEETING NEAR YOU!

Calling all members who are part of the Local 302 Health & Welfare and Pension plans:

You and your spouse are invited to attend the upcoming benefits meetings in a city close to you. Come learn more and get your questions answered about the Local 302 Health & Welfare and Pension plans. There will be presentations and staff will be available to answer any questions you may have regarding your medical coverage or retirement plan. We'll see you there!

February 25, 2025	7:00 PM – 9:00 PM	Juneau – Aspen Suites Hotel 8400 Airport Blvd Juneau, AK 99801
February 26, 2025	7:00 PM – 9:00 PM	Fairbanks – Pipeline Training Center 3600 Cartwright Court Fairbanks, AK 99707
February 27, 2025	7:00 PM – 9:00 PM	Anchorage – Local 302 Union Office 4001 Denali St Suite A Anchorage, AK 99503
March 10, 2025	6:00 PM – 8:00 PM	Spokane – Local 302 Union Office 510 S Elm St Spokane, WA 99201
March 11, 2025	7:00 PM – 9:00 PM	Kennewick – Local 302 Union Office 2637 W Albany Ave Kennewick, WA 99336
March 12, 2025	7:00 PM – 9:00 PM	Ellensburg – Local 302 Union Office 403 S Water St Ellensburg, WA 98926
March 13, 2025	7:00 PM – 9:00 PM	Bothell – Local 302 Union Office 18701 120th Ave NE Bothell, WA 98011
March 19, 2025	7:00 PM – 9:00 PM	Bremerton – Kitsap Conference Center 100 Washington Ave Bremerton, WA 98377
April 8, 2025	7:00 PM – 9:00 PM	Pocatello – Red Lion Hotel 1555 Pocatello Creek Rd Pocatello, ID 83201
April 9, 2025	7:00 PM – 9:00 PM	Boise – Local 302 Union Office 225 N 16th St Suite 211 Boise, ID 83702

ROAD WORKERS NEED YOU TO SLOW DOWN

WORKER OCCUPATIONAL FATALITIES IN ROAD CONSTRUCTION SITES



Road workers rely on YOU to keep them safe at work.



Source: Bureau of Labor Statistics
For More Information: <https://www.workzonesafety.org>

U.S. Department
of Transportation
Federal Highway
Administration

New Washington state law to protect workers on state highways

Given the uptick in traffic collisions and fatalities, including in work zones, a new law will be rolled out soon authorizing the use of work zone speed cameras in active state highway construction, maintenance, and emergency zones.

Speed safety cameras are a known deterrent for speeding drivers and help enforce speed limits, which in turn protect highway workers.

Starting March 2025 work zone safety cameras will be deployed, and violations will be steep, up to \$248 per violation.

Future efforts to ensure worker safety may be introduced during the 2025 Washington state legislative session including requiring work zone safety curriculum for first time drivers.

Far too many people are hurt or injured and killed in our work zones and it is incumbent on us to ensure we improve the safety for workers and the traveling public.

Thanks to everyone who attended the annual Local 302 holiday parties



WELCOME TO OUR NEWEST SIGNATORY CONTRACTORS!



- **Green River Industries**, serving Western Washington
- **Advanced Traffic Control**, serving Western Washington
- **HK Excavation**, serving Western Washington
- **Top Shelf Cranes**, serving Southern Idaho

Support Union and do business with these organizations today.

Interested in becoming signatory with Local 302? Improve your bottom line: have access to a skilled and trained workforce which improves your overall market share. Call us today to learn more: (425) 806-0302.

 **OPERATING
ENGINEERS**
LOCAL 302

CALLING ALL IUOE LOCAL 302 MEMBERS IN GOOD STANDING: SCHOLARSHIPS ARE AVAILABLE FOR HIGH SCHOOL SENIORS OF \$1,500 FOR ANY ACCREDITED COLLEGE OR UNIVERSITY, AND 4 SCHOLARSHIPS OF \$1,000 FOR ANY ACCREDITED COLLEGE, UNIVERSITY, OR VOCATIONAL TECHNICAL COLLEGE! APPLICATIONS WILL BE ACCEPTED JANUARY 1, 2025 THROUGH AUGUST 15, 2025.

APPLY FOR SCHOLARSHIPS NOW



SUNDAY, JUNE 8, 2025, 9AM - 1PM

BOTHELL HALL PARKING LOT
18701 120TH AVE NE BOTHELL, WA 98011

Free event
for the whole
family

BBQ and
show prize



IUOE Local 302

Shine and Show

BRING YOUR CAR, MOTORCYCLE,
BOAT, UTV (OR A FRIEND'S!)

QUESTIONS:

DAVE PADON, 206.851.6176,
DPADON@IUOE302.ORG
GABESCHOENFELDER, 206.391.2337
GSCHOENFELDER@IUOE302.ORG





Eligible members and dependents can consult with Revive doctors 24/7 – no cost for co-pays!

Did you know Revive is included in your benefits package?

This benefit includes:

- Consults with U.S.-trained doctors by phone or video conference 24/7
- Diagnoses and advice for many common medical conditions
- Prescriptions, if appropriate, sent to your preferred pharmacy
- Quality, convenient medical care, at no cost to you or your family

To schedule a consult with a doctor 24/7, call 833-SWIFTMD (833-794-3863) or login at SwiftMD.com

Revive does not replace your PCP or specialists in managing chronic and serious medical conditions, including providing routine refills. For more info review the Exclusionary Criteria at SwiftMD.com. © Revive. All rights reserved.



24/7 HEALTHCARE IS JUST A CALL A WAY!

Notice to members of Local 302 regarding rights and obligations of agency fee/financial core employees

Federal law allows workers represented by a labor union under a collective bargaining agreement that contains a union security clause to elect non-member status. Those who elect “financial core” dues payment status thereby elect non-member status. Workers who choose financial core status are known as “objectors” or “financial core payers”. That election may be made at any time. Elections may only be made by individuals. They cannot be made by groups and cannot be made on behalf of any other worker.

A worker who elects non-member status, including a financial core payer, is: 1) not permitted to attend Union meetings, including contract ratification meetings; 2) not eligible to run for Union office or vote for Union officers; 3) not eligible for an honorable withdrawal card or transfer to another Operating Engineers Local, which may result in the need to pay an initiation fee upon being transferred; 4) not eligible for certain Union benefits, such as certain life insurance policies, that are available only to Union members.

When electing to be a “financial core” non-member, the worker is required to pay “core” dues reflecting that percentage of full dues which are attributable to representational functions. At IUOE Local 302, the percentage of full dues utilized for representational purposes is presently 94%. In other words, in exchange for losing the benefits of membership identified above is 6% off full dues.

The percentage of full dues used for representational purposes

is calculated and subject to review by objectors. The number is drawn from the Union’s expenditures in performing the duties “of an exclusive representative of the employees in dealing with the employer on Labor-Management issues.” This includes expenditures for negotiations, organizing, contract enforcement such as grievance processing and arbitration, procedures before government agencies such as unfair labor practice charges and pursuit of equal rights violations, Union governance and administration, litigation, and such other activities that further the interest of the Union respecting the wages, hours and working conditions of its membership. “Non-chargeable” are expenditures for community service, affiliation with non-related organizations and political contributions.

A non-member objector is entitled to challenge the mathematics that produce the “chargeable” and “non-chargeable” percentages identified above. To do so, the objector must make a written request for a full explanation of the reduced dues being charged to them. In response, the non-member objector will be provided a detailed itemization of expenditures in both categories as well as the report showing the expenditures on which the reduced fee is based.

Non-member objectors dissatisfied with the “core dues” calculation following that process may contest the calculation before an impartial arbitrator appointed by the American Arbitration Association. A portion of the objector’s fee equal to the amount which is challenged will be held in interest-bearing escrow while the objector pursues that challenge. The Federal Rules of Evidence and the Federal Rules of Civil Procedure will govern at the arbitration requested by the dissatisfied non-member objector.

CONGRATULATIONS RETIREES

OCTOBER - DECEMBER 2024

ALAN OSBORN - LYNNWOOD, WA
BRENT JORGENS - VALDEZ, AK
CLARENCE WRIGHT - SPANAWAY, WA
DAN NELSON - ANCHORAGE, AK
DAVID MILLER - EAGLE RIVER, AK
DEAN KAYLER - CAMANO ISLAND, WA
DENNIS DAVIS - NORTH BEND, WA
DONALD DELLINGER - MOUNT VERNON, WA
DOUGLAS BLAKE - PALMER, AK
FRANCISCO LOPEZ - LAKE STEVENS, WA
GARRY BROWN - OLYMPIA, WA
JAMES MCKINNEY - FAIRBANKS, AK
JASON JENN - VALDEZ, AK
JOHN KINTER - PALMER, AK
JOHN TEMPLE - SOLDOTNA, AK
JON OLSON - FAIRBANKS, AK

JOSEPH PULSIFER - LACEY, WA
KARL ELFENBEIN - SEDRO WOOLEY, WA
KENNETH MILLER - EDMONDS, WA
KENT BROVOLD - TACOMA, WA
KIM CRUMRINE - ACME, WA
LANCE LITTLE - BUCKLEY, WA
LARRY BOGARDUS - BURLINGTON, WA
LESLIE PARKS - SEQUIM, WA
LONNIE MORRIS - NAPAVALINE, WA
LOREN HARRIS - SNOHOMISH, WA
LUIS ROBLEDO - SOUTH COLBY, WA
MARK FRAZURE - KASLOF, AK
MARK PRUETTE - GRAHAM, WA
MICHAEL LEE - EDMONDS, WA
MICHAEL MARQUARDT - SOLDOTNA, AK
RANDY BAILEY - WASILLA, AK

RANDY ROHRER - MARYSVILLE, WA
RAYMOND BOULDS - OVERTON, NV
RICHARD HONE - WASILLA, AK
RICHARD DUNN JR - RENTON, WA
RONALD DEPOE - EVERETT, WA
SHANE THOE - SEDRO WOOLLEY, WA
TIM WEBB - JUNEAU, AK

IN MEMORIAM

OCTOBER - DECEMBER 2024

IUOE LOCAL 302 MOURNS THE PASSING OF THE FOLLOWING MEMBERS

ALBERTO RODRIGUEZ - KENT, WA
C. TRENT AMES - LEWISTON, ID
CHRISTOPHER ATCHLEY - SEATTLE, WA
DONALD WARNES - LAKE BAY, WA
DOUGLAS CRANE - CARMEL, CA
EUGENE BAMBRICK - CARNATION, WA
GEORGE GIBRON - SWEET, ID
GEORGE KNAPP - ASOTIN, WA
GEORGE LANGTON - ANCHORAGE, AK
GREGG EKENBARGER - HUBBARD, OR
JAMES GORZALKA - CLEARMONT, WY
JESSE CORNELISON - WASILLA, AK

JOHN O'BRIEN - MARYSVILLE, WA
JOHN LOTAN - MARYSVILLE, WA
KEITH MARSH - KENNEWICK, WA
KEMAL BOURAOUI-KAROUI - LANSING, MI
KEVIN LA FRAMBOISE - ANCHORAGE, AK
LARRY HEYER - CHENEY, WA
MARION FRYREAR - RENTON, WA
MARK GUIN - WAVERLY, AL
NORMAN BLOUIN - GRAPEVIEW, WA
PAT NEWCOMB - PRIEST RIVER, ID
RICHARD KINNE - LEWISTON, ID
RICHARD BILLERBECK - EDMONDS, WA

ROBERT CORRA - SAMMAMISH, WA
ROBERT JEFFRIES - ARLINGTON, WA
TERRY KONOPASKI - PORT ANGELES, WA
THEODORE RAYBURN - GOLD BAR, WA
TIM MC VEETY - ONEONTA, NY
TIMOTHY KING - ELDON, MO
TOM CONAWAY - BAKER CITY, OR



TRAINING CENTERS

ELLENSBURG, WA TRAINING CENTER

www.oetraining.com | 509-968-3203

SPANGLE, WA TRAINING CENTER

www.wsopen.org | 509-235-9393

PALMER, AK TRAINING CENTER

<https://aoeett.org> | 907-746-3117

AUBURN, WA STATIONARY TRAINING PROGRAM

www.IUOE302.org | 253-351-0184

CALENDAR

DISTRICT MEETINGS

ALL MEETINGS CONVENE AT 7 P.M.

DISTRICT 1 – BOTHELL

1st Thursday of each month
Union Hall, 18701 120th Ave NE

DISTRICT 2 – BELLINGHAM

3rd Thursday of each month
1700 North State St

DISTRICT 3 – HOQUIAM

2nd Thursday of each month
Elks Club, 624 K St

DISTRICT 3 – SILVERDALE

3rd Wednesday of each month
Union Hall, 9301 Linder Way NW

DISTRICT 3 – PORT ANGELES

3rd Thursday of each month
Eagles Hall Aerie No. 483,
2843 E Myrtle St

DISTRICT 4 – WENATCHEE

2nd Thursday of each month
Veterans Hall,
1206 N Wenatchee Ave

DISTRICT 4 – ELLENSBURG

2nd Wednesday of each month
Union Hall, 403 S Water St

DISTRICT 5 – BOISE

4th Tuesday of each month
IBEW Hall, 225 N 16th St

DISTRICT 5 – LEWISTON

2nd Wednesday of each month
Central Labor Council,
1618 Idaho St Suite 102

DISTRICT 5 – POCATELLO

4th Wednesday of each month
Labor Temple, 456 N Arthur St

DISTRICT 5 – SPOKANE

2nd Monday of each month
Union Hall, 510 S Elm St

DISTRICT 5 – KENNEWICK

2nd Tuesday of each month
Union Hall, 2637 W Albany Ave

DISTRICT 6 – ANCHORAGE

4th Thursday of each month
Union Hall, 4001 Denali St

DISTRICT 7 – FAIRBANKS

4th Wednesday of each month
Union Hall, 3002 Lathrop St

DISTRICT 8 – JUNEAU

4th Tuesday of each month
Union Hall, 9309 Glacier Hwy,
Suite A-105

DISTRICT 286 – AUBURN

2nd Tuesday of each month
Union Hall, 18 E St SW

APRIL

20 Easter

28 Workers' Memorial Day

MAY

1 International Labor Day

26 Memorial Day

JUNE

5 Semi-Annual Meeting

8 Shine and Show

21 Top Hand Competition, El-
lensburg, WA



NEW OFFICE
LOCATION



INTERNATIONAL UNION OF OPERATING ENGINEERS LOCAL 302

Daren Konopaski, Business Manager and First International Vice President
18701 120th Avenue NE Bothell, Washington 98011-9514

Non-Profit Org.
U.S. Postage
PAID
Seattle, WA
Permit No. 12494

A UNION BUILT ON SAFETY, RESPECT, AND SOLIDARITY



Local 302 member, water treatment plant operator, and job steward Mark Barnett at a Lakehaven Water and Sewer District well house that provides drinking water, Federal Way, WA; check out the story on page 29

