

LOADLINE



IUOE LOCAL 302

FALL 2023

SPOTLIGHT ARTICLE:
Tips for managing
Washington State
unemployment insurance claims P. 22

IUOE LOCAL 302 OFFICERS

TABLE OF CONTENTS

Office Locations	3
Business Manager's Report	4
District Reports	6 - 21
From the Desk of the Dispatchers	22
Training Center Updates	23 - 25
Member Spotlight	26
For the Good of the Order	27 - 28
Local 302 Proud	29
Health & Welfare	30
Safety First	31
Congratulations Retirees	32
In Memoriam	32
District Meeting Schedule and Calendar	33
Training Center Locations	33

The Loadline is the official publication of the International Union of Operating Engineers Local 302 and is published multiple times throughout the year. The Loadline is mailed without charge to all members of IUOE Local 302 in good standing. Members, call Local 302 to ensure your mailing address is up to date: 1-800-521-8882.

Send comments, questions, or suggestions for the Loadline to mainoffice@iuoe302.org. POSTMASTER: Send address changes to Address Change, 18701 120th Avenue Northeast Bothell, WA 98011. Check out the Loadline online at www.iuoe302.org.

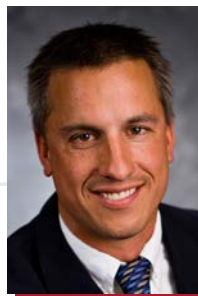
Visit: www.iuoe302.org

Follow us on: Facebook, Instagram, LinkedIn



DAREN KONOPASKI

Business Manager,
International Vice President



SEAN JEFFRIES

President



JASON ALWARD

Vice President



LAKE WILLIAMS

Treasurer



JACOB H. BLACK

Recording-Corresponding-
Financial Secretary

EXECUTIVE BOARD

Corey Baxter, Shane Linse



OPERATING ENGINEERS

LOCAL 302

ON THE COVER

Local 302 operators drive pile to secure the Hoh River riverbank and will then install a box culvert on the Olympic Peninsula, WA. These improvements will stabilize adjacent riverbanks, reduce potential for flooding and road damage, and improve fish habitat.

Editor: Alison Dempsey-Hall

OFFICE LOCATIONS

DISTRICT 1 – BOTHELL, WA

18701 120th Ave NE Bothell, WA 98011

Phone: 425-806-0302

Fax: 425-806-0030

Toll-free: 1-800-521-8882

Daren Konopaski, Business Manager,
International Vice President

Josh Swanson, Government Affairs, Guard

Jacob H. Black, In-House Counsel,

Recording-Corresponding-Financial Secretary

Gabe Schoenfelder, Field Representative

Bob Franssen, Field Representative

Dean Stoneburner, Field Representative

Dave Padon, Field Representative

Mark Allard, Field Representative

Bill Albin, Field Representative

Rick Sowa, Dispatcher

Levi Johnson, Dispatcher

DISTRICT 2 – BELLINGHAM, WA

1700 N State St Bellingham, WA 98225

Phone: 206-251-5399

Tony Zempel, Field Representative, Conductor

DISTRICT 3 – SILVERDALE, WA

3525 NW Anderson Hill Rd Silverdale, WA 98383

Phone: 360-307-0557

Eric Arntson, District Representative

DISTRICT 4 – ELLENSBURG & WENATCHEE, WA

403 S Water St Ellensburg, WA 98926

Phone: 509-933-3020

Sean Jeffries, District Representative, President

DISTRICT 5 – TRI-CITIES & SPOKANE, WA;

POCATELLO & BOISE, ID

2637 W Albany Ave Kennewick, WA 99336

Phone: 509-545-1811

Russell Walker, Field Representative, Dispatcher

Doug Donley, Field Representative

510 S Elm Spokane, WA 99201

Phone: 509-624-5365

Carl Cope, Field Representative

Kaylan Rogers, Field Representative, Dispatcher

456 N Arthur Ave Pocatello, ID 83204

Phone: 208-232-8492

Joe Perry, Field Representative

Melissa Williams, Dispatcher

225 N 16th St Suite 211 Boise, ID 93702

Shane Linse, Field Representative, Executive Board

DISTRICT 286 – AUBURN, WA

18 E St SW Auburn, WA 98001

Phone: 253-351-9095

Anthony Frascone, District Representative, Trustee

Jeff Frazier, In-House Counsel

Bryan Raby, Field Representative, Organizer

Ryen Young, Field Representative

Larry Kratz, Field Representative

Jose Miranda, Field Representative

Shelly Filippi, Field Representative

Jim Gower, Field Representative

Julie Rogel, Field Representative

John West, Field Representative

Oumar Diallo, Field Representative

DISTRICT 6 – ANCHORAGE, AK

4001 Denali St Suite A Anchorage, AK 99503

Phone: 907-561-5288

Jason Alward, District Representative, Vice President

Jamie Mack, Field Representative

Kyle Virgin, Field Representative, Auditor

Bill Sims, Field Representative, Trustee

Nathan Hall, Dispatcher

DISTRICT 7 – FAIRBANKS, AK

3002 Lathrop St Fairbanks, AK 99701

Phone: 907-452-8131

Lake Williams, District Representative, Treasurer

Crystal Tidwell, Field Representative, Auditor

Ben Johnson, Field Representative

Kim Vincelette, Dispatcher, Trustee

DISTRICT 8 – JUNEAU, AK

9309 Glacier Hwy Bldg A Suite 105 Juneau, AK 99801

Phone: 907-586-3850

Corey Baxter, District Representative, Executive Board



BUSINESS MANAGER'S REPORT

As any of our Field Representatives can tell you, there are no shortcuts to bargaining a contract.

You've got to prepare and know the current contract in-and-out before

taking a seat at the table. As important are building relationships and credibility with our stakeholder groups, our members and the company's labor relations representatives, which doesn't happen overnight.

Equally necessary is the consistent effort to organize, organize, organize.

The recent ratification of Badger Daylighting is a great example of that. This was a bottom up organizing campaign that lasted 15 months. The Badger hands stood behind our Local in achieving the first contract for this hydro-excavation company — one of few in the greater Seattle area.

Local 302 continues to grow in market share with successful endeavors like this, but we can't do it alone. It's all our responsibility, staff and mem-

bers alike, to constantly organize to grow our Union and keep it strong.

Part of organizing is being at career fairs and events across our jurisdiction of Washington, Idaho, and Alaska. These are great opportunities to connect with the community, members, and their families. Check out some photos from our recent events in this edition of the Loadline.

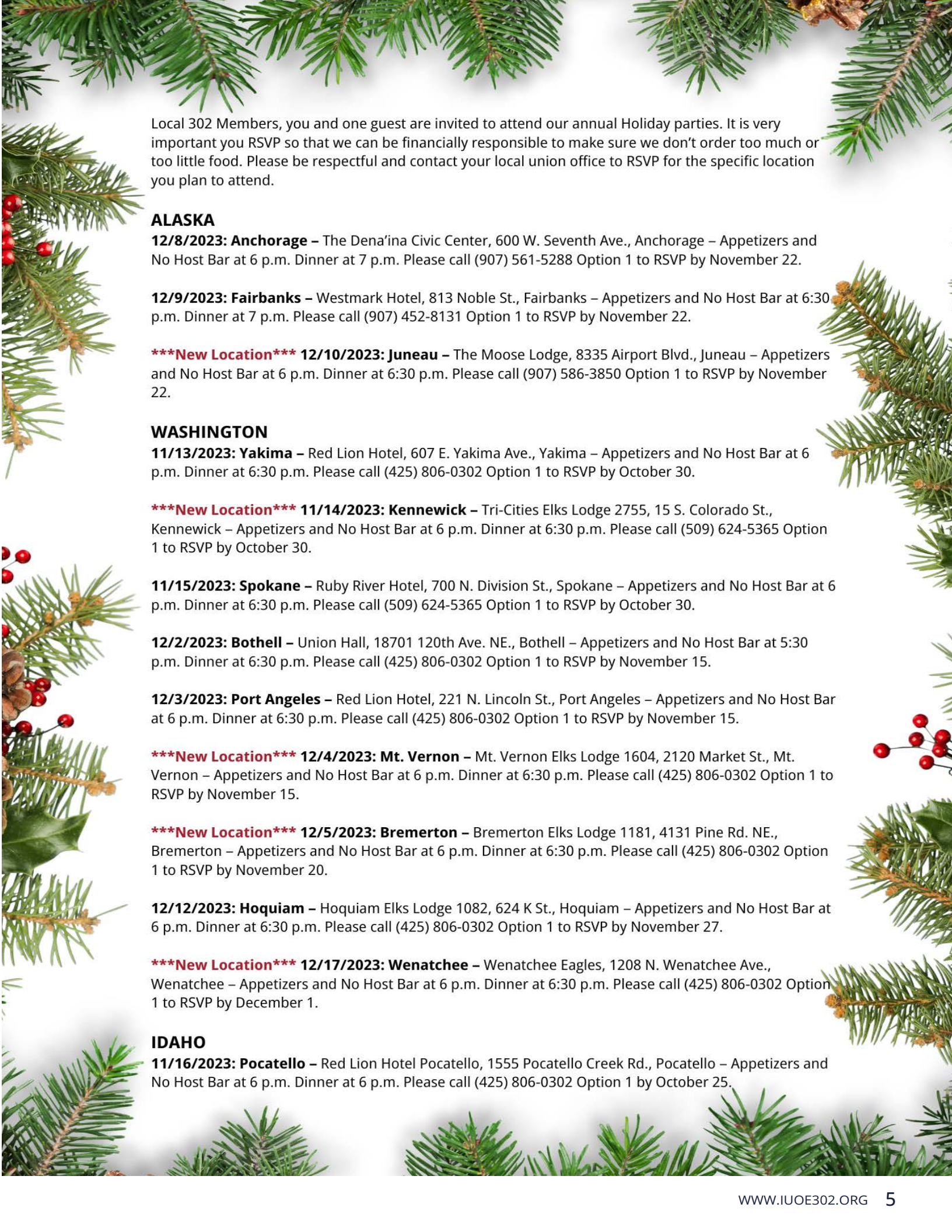
Speaking of events, it's time for the Local 302 holiday parties. View the next page for the invitation, and please make sure to RSVP on time.

I wish you and your family the best this holiday season, and I look forward to seeing you at the parties.

**In Solidarity,
Daren Konopaski
Business Manager and
International Vice President**



New Badger Daylighting members being recognized at the District 1 meeting



Local 302 Members, you and one guest are invited to attend our annual Holiday parties. It is very important you RSVP so that we can be financially responsible to make sure we don't order too much or too little food. Please be respectful and contact your local union office to RSVP for the specific location you plan to attend.

ALASKA

12/8/2023: Anchorage – The Dena'ina Civic Center, 600 W. Seventh Ave., Anchorage – Appetizers and No Host Bar at 6 p.m. Dinner at 7 p.m. Please call (907) 561-5288 Option 1 to RSVP by November 22.

12/9/2023: Fairbanks – Westmark Hotel, 813 Noble St., Fairbanks – Appetizers and No Host Bar at 6:30 p.m. Dinner at 7 p.m. Please call (907) 452-8131 Option 1 to RSVP by November 22.

*****New Location*** 12/10/2023: Juneau** – The Moose Lodge, 8335 Airport Blvd., Juneau – Appetizers and No Host Bar at 6 p.m. Dinner at 6:30 p.m. Please call (907) 586-3850 Option 1 to RSVP by November 22.

WASHINGTON

11/13/2023: Yakima – Red Lion Hotel, 607 E. Yakima Ave., Yakima – Appetizers and No Host Bar at 6 p.m. Dinner at 6:30 p.m. Please call (425) 806-0302 Option 1 to RSVP by October 30.

*****New Location*** 11/14/2023: Kennewick** – Tri-Cities Elks Lodge 2755, 15 S. Colorado St., Kennewick – Appetizers and No Host Bar at 6 p.m. Dinner at 6:30 p.m. Please call (509) 624-5365 Option 1 to RSVP by October 30.

11/15/2023: Spokane – Ruby River Hotel, 700 N. Division St., Spokane – Appetizers and No Host Bar at 6 p.m. Dinner at 6:30 p.m. Please call (509) 624-5365 Option 1 to RSVP by October 30.

12/2/2023: Bothell – Union Hall, 18701 120th Ave. NE., Bothell – Appetizers and No Host Bar at 5:30 p.m. Dinner at 6:30 p.m. Please call (425) 806-0302 Option 1 to RSVP by November 15.

12/3/2023: Port Angeles – Red Lion Hotel, 221 N. Lincoln St., Port Angeles – Appetizers and No Host Bar at 6 p.m. Dinner at 6:30 p.m. Please call (425) 806-0302 Option 1 to RSVP by November 15.

*****New Location*** 12/4/2023: Mt. Vernon** – Mt. Vernon Elks Lodge 1604, 2120 Market St., Mt. Vernon – Appetizers and No Host Bar at 6 p.m. Dinner at 6:30 p.m. Please call (425) 806-0302 Option 1 to RSVP by November 15.

*****New Location*** 12/5/2023: Bremerton** – Bremerton Elks Lodge 1181, 4131 Pine Rd. NE., Bremerton – Appetizers and No Host Bar at 6 p.m. Dinner at 6:30 p.m. Please call (425) 806-0302 Option 1 to RSVP by November 20.

12/12/2023: Hoquiam – Hoquiam Elks Lodge 1082, 624 K St., Hoquiam – Appetizers and No Host Bar at 6 p.m. Dinner at 6:30 p.m. Please call (425) 806-0302 Option 1 to RSVP by November 27.

*****New Location*** 12/17/2023: Wenatchee** – Wenatchee Eagles, 1208 N. Wenatchee Ave., Wenatchee – Appetizers and No Host Bar at 6 p.m. Dinner at 6:30 p.m. Please call (425) 806-0302 Option 1 to RSVP by December 1.

IDAHO

11/16/2023: Pocatello – Red Lion Hotel Pocatello, 1555 Pocatello Creek Rd., Pocatello – Appetizers and No Host Bar at 6 p.m. Dinner at 6 p.m. Please call (425) 806-0302 Option 1 by October 25.

DISTRICT REPORT

1

Local 302 members revamp downtown Seattle waterfront

Since the Alaskan Way Viaduct came down in 2019, a lot has changed on Seattle's downtown waterfront.

Local 302 members are the main workforce behind multiple projects to reimagine this space for residents and visitors to enjoy. These projects are intended to be completed in time for Seattle to host the 2026 international soccer competition, the FIFA World Cup, one of the biggest sporting events in the world.

Seattle Aquarium's new Ocean Pavilion

The Seattle Aquarium is expanding to include the new "Ocean Pavilion", an approximately 50,000-square-foot multi-story aquarium building alongside the future waterfront pedestrian promenade. It will be a seamless connection to a greatly improved public waterfront. People walking down the waterfront will be able to pass underneath it where they can look up through a big, round window known as the "Oculus". They'll be able to see coral reef fishes, sharks, and rays swimming above.

The project's shape has few regular angles or flat surfaces and relies on copious amounts of concrete and rebar to support its future 360,000-gallon coral reef ecosystem that will be home to more than 120 species. The Ocean Pavilion is expected to open in summer 2024. The contractor for this project is Turner Construction.

Seattle Overlook Walk

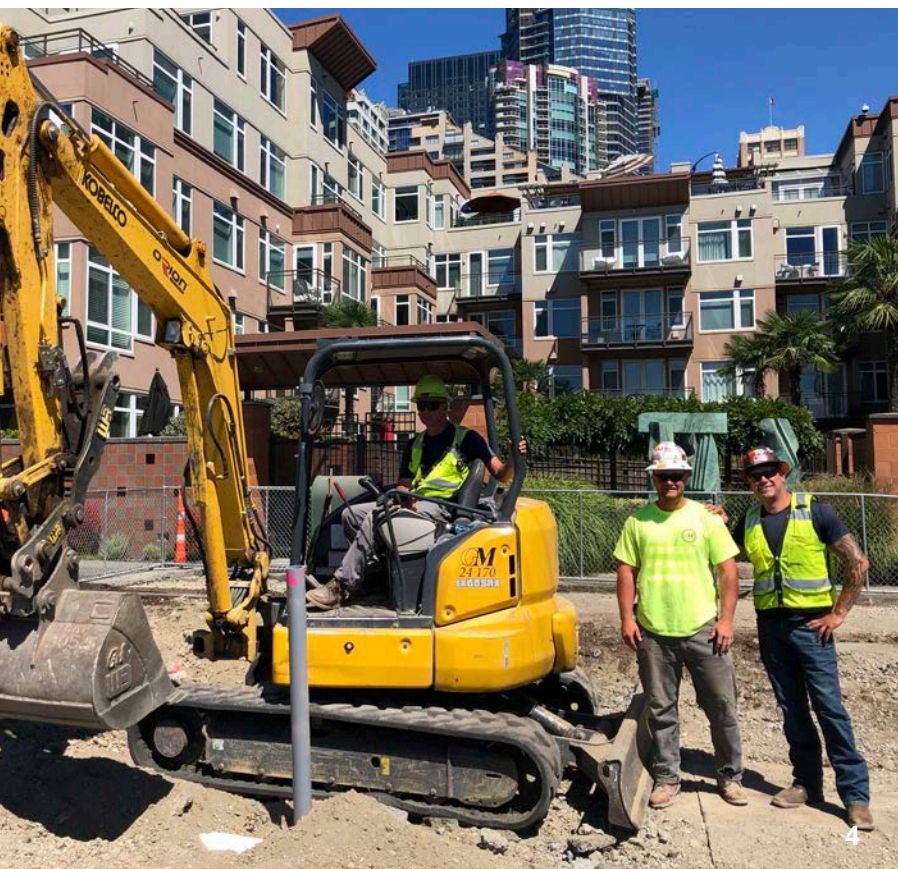
This cast-in-place pedestrian bridge is a key part of the waterfront improvement project. It will blend into the new Ocean Pavilion which will span the relocated Alaskan Way, and new Elliott Way, reaching from Pike Place Market down to the waterfront. It is scheduled to be completed in 2024. The contractor for this project is Hoffman Construction Company.

Waterfront Seattle Pier 58 Improvements

This project includes installation of a new pier and park. The new 48,000-square-foot pier will have a triangular shape, with a nearshore opening to improve salmon habitat. Its focal point will be a new children's playground that includes a four-level climbing tower resembling a jellyfish and an 18-foot slide. Other amenities planned for the pier include a shaded tree grove and elevated lawn, and a plaza and event space that can be used for concerts, outdoor movies, and other pop-up events. It is scheduled to be complete in 2024. The contractor for this project is Pacific Pile & Marine.

Marion Street Pedestrian Bridge

The new Marion Street pedestrian bridge connects First Avenue with the Colman Dock entry building at the ferry terminal and is scheduled to open sometime in 2023. The contractor for this project is Flatiron Construction.



1. Artist's rendering of the Seattle Aquarium Ocean Pavilion and the Seattle Overlook Walk [Courtesy of LMN Architects]

2. Nick Jaramillo in the crane cab working on the Seattle Overlook Walk

3. Pacific Pile & Marine hands working on the newly constructed Pier 58

4. Mike Gaethle, Apprentice Billy Causer, and Foreman Dustin Johnson working on the Seattle Waterfront Project

5. Shayne Kirby performed the hoisting working for the Marion Street Pedestrian Bridge

DISTRICT REPORT

2

Consider a career as a Heavy-Duty Equipment Mechanic or Service Oiler

Heavy-Duty Equipment Mechanic

If you'd rather work on heavy equipment instead of operating, consider a career as a Heavy-Duty Equipment Mechanic. You'll work on many types of equipment including dozers, scrapers, loaders, and large trucks to name a few. A workday may consist of minor adjustments and maintenance to equipment on the job or a complete tear down and rebuild.

Heavy-Duty Service Oilers

Heavy-Duty Service Oilers are equally important to keeping equipment moving. They service all types of earthmoving equipment, from the largest crawler tractors down to the smallest pump and everything in between. This involves preventive maintenance to the equipment as well as minor repairs, fueling, and greasing the equipment daily. The Service Oiler's job is the heartbeat of any construction project. They are the eyes and ears for the mechanic.

Both positions are in high demand in District 2 and throughout all the jurisdictions we represent in Washington, Idaho, and Alaska.

If you know someone who is working nonunion let them know our pay structure and benefits are beyond compare. Invite them to contact our main hall to learn more today at 425-806-0302.

We also have excellent apprenticeship opportunities for Heavy-Duty Mechanics and Service Oilers through our training centers:

- **Ellensburg, WA:** www.oetraining.com, 509-968-3203
- **Palmer, AK:** <https://aoeett.org>, 907-746-3117



1. Service Oiler Ben Russell using a tablet to do an electronic vehicle inspection for Granite Construction at the Everson, WA shop

2. Mechanic Ryan Lagasse operating a grinder on a dozer for Granite Construction out of the Everson, WA shop

DISTRICT REPORT

3

ICI President and Owner Eben Twaddle IV checks on progress at the Upper Hoh River Road project in Jefferson County, WA

Local 302 maintains work for Olympic Peninsula operators

When signatory contractor Primo Construction based out of Sequim, WA decided to close its business years ago Local 302 representatives sprang into action.

There was a lot of communication and forethought into identifying a company to continue to provide the work many peninsula-based operating engineers relied on.

At that time, Eben Twaddle IV, a now 31-year member of Local 302 and owner of Interwest Construction Inc. (ICI) based out of Burlington, WA was looking to expand ICI into the Sequim, WA area.

In 2014, Eben decided to take on the challenge after working closely with Local 302 representatives and Bob Reick, a peninsula-based, now 17 year Local 302 member and previous Primo Construction operator.

Between Eben and Bob, now in the position of Vice President and Operations Manager for the Peninsula Division, ICI continues to grow and expand its operations.

The ICI Peninsula Division currently provides work for about 20 operating engineers with a huge increase in market coverage. This is a good example of how Local 302 works to organize companies with great leadership and maintain work for our members.



Bob Reick, ICI Vice President and Operations Manager for the Peninsula Division, outside the new office in Port Angeles, WA



Operator Cameron Joutsen working on road improvements for the City of Port Angeles Race Street Project for ICI



Operators Shavik Pearson and Darrell Johnson at the new ICI pit outside of Forks, WA

DISTRICT REPORT

4

Enhancing travel across Interstate 90

Interstate 90 is a critical transportation corridor connecting the large population and business centers of the Puget Sound with the agricultural industries and recreational activities of eastern Washington.

Local 302 operators have been fundamental to the I-90 Snoqualmie Pass East Project to improve 15 miles from Hyak to Easton to meet both the current and future needs of this transportation corridor. The entirety of this project spans 2009 – 2029.

Phases 1 and 2 from Hyak to the Stampede Pass interchange are complete. Local 302 operators did all the heavy civil work including widening the road from 4 lanes to 6, drilling all foundation support and assisting in bridge construction, built a massive retaining wall, constructed large bridges in

the avalanche hazard area, and constructed and shaped the wildlife over and under passes.

Phase 3 is underway with operators doing all the heavy civil work, widening the Interstate including forest removal, rock drilling, foundation support drilling, assisting with building the bridges, large cuts and fills to expand the freeway from 4 lanes to 6 lanes.

When this project is complete, travelers will experience a safer, more efficient six-lane freeway, minimized closures because of avalanches and rockslides, and a smoother ride due to new pavement designed to last 50 years. Wildlife habitat on either side of I-90 will be reconnected with the installation of new bridges and culverts, protecting both wildlife, and the traveling public.





1. Sean Benefield and Stephen Mowery operating a rock drill
2. Mike Hull Jr.'s view from the cab of an excavator above Interstate 90
3. Mike Lee operates an excavator and Scott Welcome in the haul truck at the Interstate 90 project

IUOE

LOCAL 302



Keeping Sandpoint, Idaho rolling — Junction Connector Rail Bridge Project now complete

Freight rail plays an important role in the regional economy, transporting the goods and commodities we all use every day.

Local 302 operators were instrumental to this BNSF Railway project. Working for Ames Construction, they built

a second rail bridge over Lake Pend Oreille in Idaho adjacent to the existing rail bridge, as well as new bridges over Sand Creek and Bridge Street in Sandpoint.

The completed lake bridge is comprised of 49 spans, 224 precast concrete girders, and approximately 55,000 feet of 36-inch pipe pile.

The second mainline track eliminates a railway choke-point by enabling trains to run in both directions. It also improves the flow of freight and passenger trains through the region and eliminates the need for trains to idle and block roadways while waiting to cross the lake on a single track.

1. Original single track over Lake Pend Oreille, ID [photo courtesy of BNSF Railway]

2. Crane Operator Allan Merrill removes the old train trestle

3. Crane Operator Dillan Engblom 302 hoists a girder

4. Second rail bridge built adjacent to the existing rail bridge over Lake Pend Oreille, ID [Photo courtesy of Ames Construction]





3



4

Municipality of Anchorage, Alaska — Street Maintenance Crew

Our 135 Municipality of Anchorage members help make this Alaskan city a great place to live.

Their work contributes to the maintenance and operation in the following departments:

- Street Maintenance
- Port of Alaska
- Merrill Field Airport
- Solid Waste Services

These members perform many different types of work. In this Loadline article we're highlighting the Street Maintenance Department and will cover the other de-

partments in future editions.

The 75-member Street Maintenance crew's primary mission is taking care of all pavement surfaces, pedestrian infrastructure, storm drains, and plowing and removal of snow during the winter months.

The Street Maintenance Department maintains approximately 1,300 lane miles of municipal roads and approximately 200 miles of sidewalks and bike trails. They provide continuous year-round service to keep the streets, sidewalks, and trails in the Anchorage Bowl maintained.



Above photo: Ryan Frise inserts a remote-controlled robot to inspect a storm drain many hundreds of feet at a time; The camera is used across the City of Anchorage to determine the state of condition, repairs needed, etc.

Left photo: [from left to right] Ryan Frise and District Representative Jason Alward at the back of the truck used to inspect storm drains with cameras



Street Maintenance Vactor crew [from left to right] Jeff Christ Jr., Jeff Binegar, Linus Mathis IV, Ryan Echols, and Kristian Johnson; Once a year, 3 Vactor trucks are used to clean out the oil grid separator (OGS) structure on C Street



Downtown Street Maintenance crew racking snow on Ingra Street



Street Maintenance capital projects crew constructing the new skate park off C Street



Vactor crew member Linus Mathis IV coming out of the access spillway of the OGS after the Vactor work is complete

Prudhoe Bay gravel operations with an oil drill rig in the far background, North Slope, AK

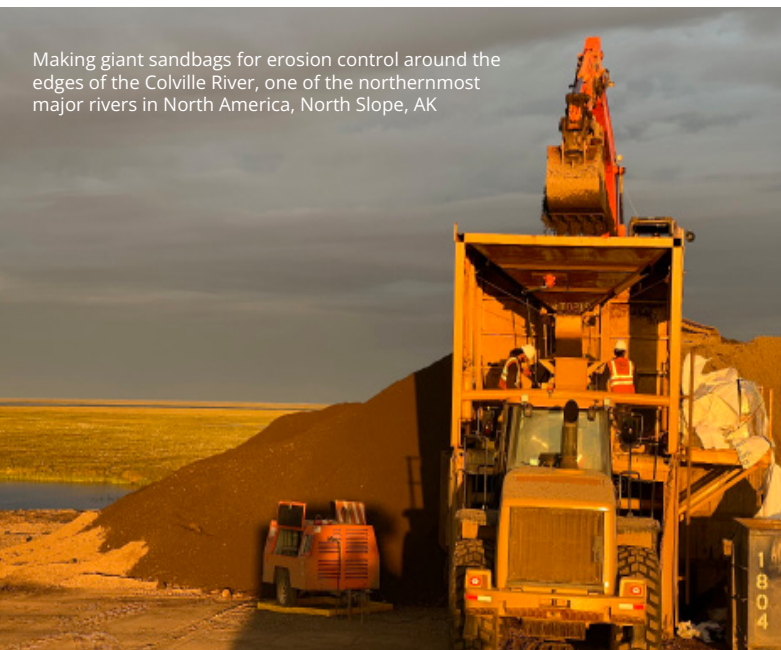
What it's like to live and work on Alaska's North Slope

If you haven't been to Alaska's North Slope it could be hard to imagine living and working in one of the world's most remote and challenging energy centers.

Work is booming on the Slope and is expected to increase over the next 5-10 years not only for oil production, but maintenance of the roads that connect this vast area. There is a high demand for operators with skills of all types including NCCCO crane, sideboom/Volvo pipelayers, Watson drillers, mechanics and service oilers, blade, excavator, and loader. Local 302 is actively recruiting operators to fill these roles.

We reached out to long time "Sloper" and Local 302 member Billy Hennon, and Local 302 Business Agent

Making giant sandbags for erosion control around the edges of the Colville River, one of the northernmost major rivers in North America, North Slope, AK



Benjamin Johnson who worked on the slope for 15 years, to provide an on the ground perspective.

What kind of work do Local 302 operators perform?

After the tundra temperature reaches below freezing with 12 inches of frost and 4-6 inches of snow, work starts. Ice roads and massive ice pads are built to protect the tundra from any construction damage.

As soon as the depth of frost reaches 12 inches a loader with a water buffalo and a rock truck start pioneering to even out rough terrain spots. After ice roads, ice pads are built, and pipeline season begins.

The pipe gang puts joints together then the firing line finishes off welds with side booms. The raise up crew use cranes, excavators, and pipe layers to set pipe onto the set Vertical Support Members (VSM). Tie in crews then weld the tie in spools with cranes, side booms, pipe layers, and a loader. The highest safety standards are expected through all work phases.

What's a typical schedule?

The standard schedule is usually 6 weeks on with a minimum of 1 or 2 weeks off, 7 days a week, with 10/12-hour days. It's demanding, but very fulfilling work. The schedule on the Slope can be full force, or sometimes it's 40 degrees below zero and you're on standby wait-

ing for weather conditions to improve. There is guaranteed 8-hour pay for severe weather days when you can't work. Many people stay at camps.

What does camp life look like? And the weather?

The camps look like a hotel. Depending on the job and company, you could have a roommate with the same shift or an opposite shift. One of the perks is the hearty breakfast, lunch, and dinner the kitchen serves. And there are plenty of food and snacks in between. You live with the people you work with so it's a social environment and comradery is important. Cleanliness is considered a big deal, and not keeping your room decent can result in termination.

Many of the camp locations are quite remote amid the often flat and vast landscape. Winter weather on the Slope can be punishingly cold, even by Alaska standards and it can be quite dark — but there's a beauty in it all.

What are benefits of working on the North Slope?

One of the biggest benefits is the food and housing are paid for. There's also no commuting to work, and your meals are cooked for you. Life is simpler with less distraction from running errands, appointments, shopping for groceries, and other routine chores.

Pay: General Foreman \$51.95, Foreman \$49.61, Group 1AB Mechanics, Cranes, Side Boom \$47.49, Group 1A Loader, Excavator, Dozer and Blade \$45.86, Group 1 \$43.59.

What is needed for working on the Slope?

- Fit For Duty Test — the company sets this up; Come prepared to be in decent shape: no high blood pressure, be able to touch your toes, go to one knee then stand and switch to the other knee without assistance getting back up
- North Slope Training Cooperative or "NSTC Card"
- Travelers must provide home local dues receipt to show good standing
- Heavy-Duty Mechanics and Service Oilers need a Commercial Driver's License (CDL) and the Hazmat Endorsement
- Approximately October–May workers are required to carry Arctic rated gear in the field

What advice would you give to a new Sloper?

Come with patience, a positive attitude, and an open mind. Sometimes operators who come from the lower 48 states think the pace is too slow, but they adjust. Observe and don't be afraid to jump in when help is needed. There's a lot of infrastructure, but it's remote. Plan what you'll need to be comfortable and bring it.

Kadence Brinkman operating a front end loader on the North Slope, AK



Nate Narum operating grader, Luke Lawrence assisting on the ground, paving sidewalk for the Douglas Highway Resurfacing Project, Juneau, AK; this is an example of a project funded by the Alaskan capital budget

Where does Alaska construction funding come from?

State of Alaska Capital (Construction) Budget

The Alaska capital budget is a plan for how the state will spend its money in the next year, including what projects it'll invest in, what services it'll provide, and how it'll handle unexpected expenses.

The capital budget funds a variety of construction projects. Here are a few examples:

1. **Infrastructure:** This includes the construction and maintenance of roads, bridges, airports, and public transit systems. For example, the budget might allocate funds for the reconstruction of a major intersection.
2. **Public Facilities:** The budget also covers the construction, renovation, and maintenance of public buildings and facilities. This could include schools, hospitals, libraries, parks, and government buildings.
3. **Housing:** Some funds may be allocated towards the construction or renovation of affordable housing units or shelters.
4. **Environmental Projects:** This could include construction related to environmental conservation efforts, such as building facilities for waste management or water treatment.

Taxes from oil production and matching federal dollars

Alaska relies on revenue generated from various oil- and gas-related taxes and royalties to fund state operating and capital budgets. State general funds, including oil- and gas-related general funding, appropriated to the capital budget provide a critical match required to access federal infrastructure funding.

In 2018 approximately \$150 million of oil- and gas-related revenue was used to fund capital projects throughout Alaska. While this capital funding is often matched with funding from other sources (especially federal dollars), in general this level of construction spending would have direct and indirect effects of approximately 1,400 jobs and \$80 million in wages.

Sources: Alaska Department of Labor and Workforce Development; The Role of the Oil & Gas Industry in Alaska's Economy, Alaska Oil and Gas Association, January 2020



Jaret Reid ripraping the Mendenhall riverbank with armor rock from the glacier flood, near Juneau, AK; this is an example of a project funded by the Alaskan capital budget



Operator Dylan Kubley with his son Ben on a lunch break at a sewer/water road reconstruction project on Cedar Drive in Juneau, AK; this is an example of a project funded by the Alaskan capital budget

DISTRICT REPORT

286

Local 302 operators maintain the 12 mile SEA Airport baggage conveyor belt

Seattle-Tacoma International Airport operators ensure the best possible experience for travelers

When you fly, like most travelers you're probably focused on whether your flight is on time, and how comfortable you'll be on the airplane. You may not be aware that like most well run operations, the real magic happens behind the scenes.

Approximately 115 Local 302 members perform a variety of critical functions at Seattle-Tacoma International Airport (SEA Airport) to make sure passengers and their

possessions reach the final destination.

"If we're doing our job right, people don't even really realize we're here."

- James Rabe, Local 302 SEA Airport Stationary Engineer

Airplane passengers breathe fresh air, without running jet engines

Journeyman Engineers operate the award winning Pre-Conditioned Air System. The centralized plant pumps

move hot and cold fluids through 15 miles of pipes to each of the airport's 103 jet gates where a unit then pre-conditions warm or cool air to be blown into the aircraft.



James Rabe next to a passenger load bridge at SEA Airport



Pre-Conditioned air system pumps

Once a plane lands, it connects to shore power and cuts the engines, pumping the pre-conditioned air directly into the plane through the loading bridges. These telescoping tunnels extend and retract to meet arriving planes to unload/load passengers. Local 302 operators maintain all mechanical components such as tunnel rollers, vertical lift ball screws and motor, horizontal drives, and many other important components to keep all 81 bridges in service to meet SEA air travel demands.

Outside of this system, airlines would have to run the engines to achieve the same effect. This is an incredibly unique system designed for SEA Airport that saves airlines over \$15 million per year by cutting fuel use by 5 million gallons and cutting carbon emissions by ~40,000 metric tons.

Maintaining the 12-mile luggage conveyor belt, and more critical functions

Mechanical Maintenance Engineers maintain and repair 12 miles of the luggage conveyor belt system in addition to the 81 loading bridges, 317 doors (air cargo, bag well, security, fire, grills), 16 perimeter gates, and more.

Without Local 302 operators' work, the airport would come to a halt.



From left to right: Operating Engineers Jay Sarver and Jeff Bynum stand under a pre-conditioned air unit on a passenger loading bridge



Gavin Jury in the SEA Airport baggage system control center

FROM THE DESK OF THE DISPATCHERS

Tips for managing Washington State unemployment insurance claims

We continue to receive numerous reports about issues with the Washington State Employment Security Department (ESD) processing of Local 302 Hoisting and Portable (construction) unemployment insurance claims.

Read these tips to ensure your unemployment benefits are approved and you are responsive to issues that may arise:

- Always ensure you're on the Local 302 Out of Work List as soon as you leave employment, and your membership dues are in good standing.
- Choose to receive correspondence via mail AND email to make sure you don't miss any updates.
- Choose "regular layoff" as opposed to the "stand-by" option. Stand-by claims are often rejected when there is not a specific return to work date.
- If you are at the training center do not check you are in "school". ESD interprets this as you are going to college and are not ready, willing, and able to return to work. You should always check the "union shop" training option and that you are available for work.
- If you encounter situations where you are over 6 weeks of pending claims, contact your Field Representative for assistance.
- If you receive an overpayment statement (you owe

money) do not let the appeal timeframe lapse and be sure, if you believe they are incorrect in their findings, to be timely in filing the appeal.

- After you're re-employed you still need to frequently log onto *e-services* and respond to claims questions right away:



For more information check out the Unemployed Worker Handbook:



Need to file an unemployment claim in Alaska?

Ensure you're on the Out of Work List as soon as you leave employment, and your membership dues are in good standing.

For more information:



For tips on how to apply visit:



Need to file an unemployment claim in Idaho?

For more information:



For tips on how to apply visit:



TRAINING CENTER UPDATES

ELLENSBURG, WA TRAINING CENTER

2023 - 2024 Operating Engineers Training at a Glance

All Classes Are Subject To Change - **Starting Sept 11, 2023** - Call the Ellensburg Training Office to Sign Up for All Courses: (509) 968-3203 www.oetraining.com

Apprentice and Journey Level Training:		40-Hour Hazmat:		Apprenticeship Program:	
CHOOSE ONE: Grade Checking, Forklift, Dozer, Loader, Blade, Backhoe, Excavator		December 4 - 8, 2023 - Online ZOOM Call February 5 - 9, 2024 - Online ZOOM Call April 15 - 19, 2024 - Online ZOOM Call		Apprenticeship Applications Due: November 10, 2023 by 5 pm www.oetraining.unionimpact.com	
October 23 - November 2, 2023	2-Wk Course: Mon-Thurs	8 am - 4 pm (5 Days)		Interviews / Safety & Orientation:	
November 6 - 16, 2023	2-Wk Course: Mon-Thurs	8 am - 4 pm (5 Days)		Interviews @ Ellensburg: January 25, 26, 27, 2024	
November 27 - December 7, 2023	2-Wk Course: Mon-Thurs			Interviews @ Bothell: January 17, 18, 19, 2024	
December 11 - 21, 2023	1-Wk Course: Mon-Thurs			Interviews @ Tacoma: January 10, 11, 12, 2024	
January 8 - 18, 2024	2-Wk Course: Mon-Thurs			S&O @ Ellensburg: March 4 - 7, March 11 - 14, and March 18 - 21, 2024	
January 22 - February 1, 2024	2-Wk Course: Mon-Thurs			Entry-Level Apprentice Training:	
February 5 - 15, 2024	2-Wk Course: Mon-Thurs			April 29 - June 20, 2024 (8-Weeks (Mon - Thurs))	
February 19 - February 29, 2024	2-Wk Course: Mon-Thurs			TOP HAND COMPETITION:	
March 25 - April 4, 2024	2-Wk Course: Mon-Thurs			Saturday, June 22, 2024 @ Ellensburg Training Center	
April 8 - 18, 2024	2-Wk Course: Mon-Thurs			Compete for the title of "Top Hand" in a variety of equipment: Dozer, Loader, Blade, Excavator, Backhoe, Forklift, Truck and Trailer, Hydraulic and Lattice Cranes. Bring the whole family to explore the Training Center and enjoy a fun-filled day with free activities! Check the website for more information: www.oetraining.com	
Hydraulic OR Lattice Crane Training:		8-Hour Hazmat Refresher:		NCCCO Paper and Pencil Written Exams:	
October 23 - November 16, 2023	4-Wk Course: Mon-Thurs	September 30, 2023 - Online ZOOM Call	7 am - 3:30 pm	Visit the Training Website or Call the Training Office for information and to Sign Up. Online application and payment due prior to test date.	
November 27 - December 21, 2023	4-Wk Course: Mon-Thurs	October 21, 2023 @ Tacoma	7 am - 3:30 pm	October 7, 2023 @ Tacoma	
January 8 - February 1, 2024	4-Wk Course: Mon-Thurs	November 11, 2023 @ Bothell	7 am - 3:30 pm	November 4, 2023 @ Bothell	
February 5 - 19, 2024	4-Wk Course: Mon-Thurs	December 9, 2023 - Online ZOOM Call	7 am - 3:30 pm	NCCCO Crane & Rigger/Signal - Refresher Courses:	
March 25 - April 18, 2024	4-Wk Course: Mon-Thurs	December 11 - 12, 2023 - Online ZOOM Call	5 - 9 pm (2 Nights)	Visit the Training Website or Call the Training Office for information and to Sign Up	
Tower Crane:		January 8, 2024 - Online ZOOM Call	8 am - 4:30 pm	MOBILE Core: September 30, 2023 @ Tacoma 8 am - Noon	
October 23 - November 2, 2023	2-Wk Course: Mon-Thurs	January 13, 2024 - Online ZOOM Call	7 am - 3:30 pm	MOBILE Load Charts: September 30, 2023 @ Tacoma 12:30 - 5 pm	
November 6 - 16, 2023	2-Wk Course: Mon-Thurs	February 19, 2024 - Online ZOOM Call	7 am - 3:30 pm	TOWER: October 1, 2023 @ Tacoma 8 am - Noon	
November 27 - December 7, 2023	2-Wk Course: Mon-Thurs	February 21 - 22, 2024 - Online ZOOM Call	5 - 9 pm (2 Nights)	RIGGER & SIGNAL: October 28, 2023 @ Bothell 8 am - 5 pm	
December 11 - 21, 2023	2-Wk Course: Mon-Thurs	March 2, 2024 - Online ZOOM Call	7 am - 3:30 pm	MOBILE Core: January 20, 2024 @ Bothell 8 am - Noon	
January 8 - 18, 2024	2-Wk Course: Mon-Thurs	March 11 - 12, 2024 - Online ZOOM Call	5 - 9 pm (2 Nights)	MOBILE Load Charts: January 20, 2024 @ Bothell 12:30 - 5 pm	
January 22 - February 1, 2024	2-Wk Course: Mon-Thurs	April 20, 2024 - Online ZOOM Call	7 am - 3:30 pm	TOWER: January 21, 2024 @ Bothell 8 am - Noon	
February 5 - 15, 2024	2-Wk Course: Mon-Thurs	May 11, 2024 - Online ZOOM Call	7 am - 3:30 pm	RIGGER & SIGNAL: February 24, 2024 @ Tacoma 8 am - 5 pm	
February 19 - February 29, 2024	2-Wk Course: Mon-Thurs	OSHA 10: *Must attend all days*		TOWER: March 25, 2024 @ Kennewick 5 - 9 pm	
March 25 - April 4, 2024	2-Wk Course: Mon-Thurs	October 2 - 3, 2023 - Online ZOOM Call	9 am - 2 pm (2 Days)	MOBILE Load Charts: March 26, 2024 @ Kennewick 5 - 9 pm	
April 8 - 18, 2024	2-Wk Course: Mon-Thurs	November 15 - 16, 2023 @ Bothell	7 am - Noon (2 Days)	MOBILE Core: March 27, 2024 @ Kennewick 5 - 9 pm	
CDL Training:		November 27 - 29, 2023 - Online ZOOM Call	5 - 8:30 pm (3 Nights)	RIGGER & SIGNAL: March 28, 2024 @ Kennewick 8 am - 5 pm	
*Paperwork Due Early! Call the Training Office for More Information		December 12 - 13, 2023 - Online ZOOM Call	7 am - 1 pm (2 Days)	MOBILE Core: May 8, 2024 @ Spokane 5 - 9 pm	
September 11 - October 11, 2023	CLASS A 5-Wk Course (Mon-Thurs)	March 18 - 20, 2024 - Online ZOOM Call	5 - 8:30 pm (3 Nights)	MOBILE Load Charts: May 7, 2024 @ Spokane 5 - 9 pm	
October 16 - November 15, 2023	CLASS A 5-Wk Course (Mon-Thurs)	April 22 - 24, 2024 - Online ZOOM Call	5 - 8:30 pm (3 Nights)	MOBILE Core: May 8, 2024 @ Spokane 5 - 9 pm	
November 27 - December 13, 2023	CLASS B 3-Wk Course (Mon-Thurs)	May 13 - 15, 2024 - Online ZOOM Call	5 - 8:30 pm (3 Nights)	RIGGER & SIGNAL: May 9, 2024 @ Spokane 8 am - 5 pm	
January 8 - February 7, 2024	CLASS A 5-Wk Course (Mon-Thurs)	OSHA 30: *Must attend all days*		RIGGER & SIGNAL: June 15, 2024 @ Tacoma 8 am - 5 pm	
February 12 - 28, 2024	CLASS B 3-Wk Course (Mon-Thurs)	January 22 - 26, 2024 - Online ZOOM Call	8 am - 3 pm (5 Days)	NCCCO Rigger & Signaling Practical Exams:	
March 25 - April 24, 2024	CLASS A 5-Wk Course (Mon-Thurs)	March 4 - 8, 2024 - Online ZOOM Call	8 am - 3 pm (5 Days)	Call the Training Office to Sign Up for Scheduled Time	
April 29 - May 30, 2024	CLASS A 5-Wk Course (Mon-Thurs)	Refinery Safety (20-HR RSO): *Must attend all days*		October 21 - 22, 2023 @ Bothell	
May 28 - June 27, 2024	CLASS A 5-Wk Course (Mon-Thurs)	September 16 - 17, 2023 @ Bothell	7 am - 5 pm (2 Days)	February 17 - 18, 2024 @ Tacoma	
DOT Hazmat Endorsement		October 23 - 24, 2023 @ Tacoma	7 am - 5 pm (2 Days)	March 29 - 30, 2024 @ Kennewick	
*Paperwork Due Beforehand - Call the Training Office for More Information		November 13 - 14, 2023 @ Bothell	7 am - 5 pm (2 Days)	April 6 - 7, 2024 @ Bothell	
To Be Determined @ Ellensburg Training Center or via ZOOM		First Aid/CPR:		May 10 - 11, 2024 @ Spokane	
Qualified Rigger & Signal Person:		October 22, 2023 @ Tacoma	7 - 11 am	June 8 - 9, 2024 @ Tacoma	
Call the Training Office for to Sign Up		November 12, 2023 @ Bothell	7 - 11 am		
One Evening Class @ Ellensburg Training Center		November 30, 2023 - Online ZOOM Call	5 - 9 pm		
CESCL:		December 1, 2023 - HANDS ON CPR Practical	8 am - Noon *Schedule Time Slot to Test		
Call the Training Office to Sign Up		December 18, 2023 - Online ZOOM Call	8 am - Noon		
Three Evening Classes and 1 Day Class @ Ellensburg Training Center		December 19, 2023 - HANDS ON CPR Practical	8 am - Noon *Schedule Time Slot to Test		
		January 9, 2024 - Online ZOOM Call	5 - 9 pm		
		January 10, 2024 - HANDS ON CPR Practical	Noon - 4 pm *Schedule Time Slot to Test		
		February 1, 2024 - Online ZOOM Call	9 am - 2 pm		
		February 2, 2024 - HANDS ON CPR Practical	9 am - 2 pm *Schedule Time Slot to Test		
		March 21, 2024 - Online ZOOM Call	5 - 9 pm		
		March 22, 2024 - HANDS ON CPR Practical	8 am - Noon *Schedule Time Slot to Test		
		April 25, 2024 - Online ZOOM Call	5 - 9 pm		
		April 26, 2024 - HANDS ON CPR Practical	8 am - Noon *Schedule Time Slot to Test		
		GPS / Blueprints / Survey Training:			
		To Be Scheduled - Call the Training Office to Sign Up for Wait Lists			



Ellensburg, WA Training Center campus



Spangle, WA Training Center campus

SPANGLE, WA TRAINING CENTER

2023 - 2024 Operating Engineers Training at a Glance (DISTRICT 5)

CALL SPANGLE	CALL ELLENSBURG	
Call the Spangle Training Office to Sign up for Equipment Classes below (509) 235-9393. Visit www.wsopen.org for more information	Starting Sept 11, 2023 - Call the Ellensburg Training Office at (509) 968-3203 to Sign Up for Safety Classes and CCO testing listed below. Visit www.oetraining.com for more information	
Apprentice / Journey Level Training: 2 Week Courses / Monday - Thursday (7 am - 5 pm) @ Spangle Training Center	Safety Courses:	CCO Refreshers and Testing:
Dozer	40-Hour Hazmat:	NCCCO Crane & Rigger/Signal - Refresher Courses:
October 23 - November 2, 2023 November 6 - 16, 2023 November 27 - December 7, 2023 December 11 - 21, 2023 January 8 - 18, 2024 January 22 - February 1, 2024 February 5 - 15, 2024 February 19 - February 29, 2024 March 25 - April 4, 2024 April 8 - 18, 2024	December 4 - 8, 2023 - Online ZOOM Call 8 am - 4 pm (5 Days) February 5 - 9, 2024 - Online ZOOM Call 8 am - 4 pm (5 Days) April 15 - 19, 2024 - Online ZOOM Call 8 am - 4 pm (5 Days)	Visit the Training Website or Call the Training Office for Information and to Sign Up Kennewick TOWER: March 25, 2024 5 - 9 pm MOBILE Load Charts: March 26, 2024 5 - 9 pm MOBILE Core: March 27, 2024 5 - 9 pm RIGGER & SIGNAL: March 28, 2024 8 am - 5 pm
Excavator	8-Hour Hazmat Refresher:	Spokane
October 23 - November 2, 2023 November 6 - 16, 2023 November 27 - December 7, 2023 December 11 - 21, 2023 January 8 - 18, 2024 January 22 - February 1, 2024 February 5 - 15, 2024 February 19 - February 29, 2024 March 25 - April 4, 2024 April 8 - 18, 2024	September 30, 2023 - Online ZOOM Call 7 am - 3:30 pm December 9, 2023 - Online ZOOM Call 7 am - 3:30 pm December 11 - 12, 2023 - Online ZOOM Call 5 - 9 pm (2 Nights) January 8, 2024 - Online ZOOM Call 8 am - 4:30 pm January 13, 2024 - Online ZOOM Call 7 am - 3:30 pm February 10, 2024 - Online ZOOM Call 7 am - 3:30 pm February 21 - 22, 2024 - Online ZOOM Call 5 - 9 pm (2 Nights) March 2, 2024 - Online ZOOM Call 7 am - 3:30 pm March 11 - 12, 2024 - Online ZOOM Call 5 - 9 pm (2 Nights) April 20, 2024 - Online ZOOM Call 7 am - 3:30 pm May 11, 2024 - Online ZOOM Call 7 am - 3:30 pm	TOWER: May 6, 2024 5 - 9 pm MOBILE Load Charts: May 7, 2024 5 - 9 pm MOBILE Core: May 8, 2024 5 - 9 pm RIGGER & SIGNAL: May 9, 2024 8 am - 5 pm
Loader	OSHA 10: *Must attend all days*	NCCCO Crane & Rigger/Signal - Written Exams:
October 23 - November 2, 2023 November 6 - 16, 2023 November 27 - December 7, 2023 December 11 - 21, 2023 January 8 - 18, 2024 January 22 - February 1, 2024 February 5 - 15, 2024 February 19 - February 29, 2024 March 25 - April 4, 2024 April 8 - 18, 2024	October 2 - 3, 2023 - Online ZOOM Call 9 am - 2 pm (2 Days) November 27 - 29, 2023 - Online ZOOM Call 5 - 8:30 pm (3 Nights) December 13 - 15, 2023 - Online ZOOM Call 5 - 8:30 pm (3 Nights) February 12 - 13, 2024 - Online ZOOM Call 7 am - 1 pm (2 Days) March 18 - 20, 2024 - Online ZOOM Call 5 - 8:30 pm (3 Nights) April 22 - 24, 2024 - Online ZOOM Call 5 - 8:30 pm (3 Nights) May 13 - 15, 2024 - Online ZOOM Call 5 - 8:30 pm (3 Nights)	Written Exams will be taken through Computerized Testing Options. Visit www.nccco.org to pay and schedule written testing. Contact the Ellensburg Training Center for more information. * Reimbursement is available for approved members after successful completion of certification (passing both written and practical exams). Contact the Training Center for details and to submit paperwork for reimbursement.
Apprenticeship: ~ Visit www.wsopen.org to apply ~ Safety & Orientation (New Applicants Only)	OSHA 30: *Must attend all days*	NCCCO Rigging & Signaling Practical Exams:
March 4 - 7, 2024 Spangle Training Center March 11 - 14, 2024 Spangle Training Center March 18 - 21, 2024 Spangle Training Center	January 22 - 26, 2024 - Online ZOOM Call 8 am - 3 pm (5 Days) March 4 - 8, 2024 - Online ZOOM Call 8 am - 3 pm (5 Days)	Kennewick March 29 - 30, 2024 Call ELLENSBURG to Sign Up for Scheduled Time
Entry-Level Apprentice Training (New Applicants Only)	First Aid/CPR:	Spokane
April 29 - June 20, 2024 Spangle Training Center	November 30, 2023 - Online ZOOM Call 5 - 9 pm December 1, 2023 - HANDS ON CPR Practical 8 am - Noon *Schedule Time Slot to Test December 18, 2023 - Online ZOOM Call 8 am - Noon December 19, 2023 - HANDS ON CPR Practical 8 am - Noon *Schedule Time Slot to Test January 9, 2024 - Online ZOOM Call 5 - 9 pm January 10, 2024 - HANDS ON CPR Practical Noon - 4 pm *Schedule Time Slot to Test February 1, 2024 - Online ZOOM Call 9 am - 2 pm February 2, 2024 - HANDS ON CPR Practical 9 am - 2 pm *Schedule Time Slot to Test March 21, 2024 - Online ZOOM Call 5 - 9 pm March 22, 2024 - HANDS ON CPR Practical 8 am - Noon *Schedule Time Slot to Test April 25, 2024 - Online ZOOM Call 5 - 9 pm April 26, 2024 - HANDS ON CPR Practical 8 am - Noon *Schedule Time Slot to Test	May 10 - 11, 2024 Call ELLENSBURG to Sign Up for Scheduled Time
		TOP HAND COMPETITION: Saturday, June 22, 2024 @ Ellensburg Training Center Compete for the title of "Top Hand" in a variety of equipment: Dozer, Loader, Blade, Excavator, Backhoe, Forklift, Truck and Trailer, Hydraulic and Lattice Cranes. Bring the whole family to explore the Training Center and enjoy a fun-filled day with free activities! For more information: www.oetraining.com

*The loader, dozer, and excavator classes at the Spangle Training Center are only available to District 5 members.

ALASKA TRAINING CENTER

The Alaska Training Center has over 175 apprentices working long hours to complete their programs quicker than usual, so this means they'll be ready for work soon.

This is good news because it will be a busy winter on the North Slope. Look at getting all necessary credentials now including a current North Slope Training Cooperative (NSTC) card. Don't forget to register for your upgrade and safety classes. You can do that right from your mobile phone using the Alaska Training Center app. You can also use the app to see the status of your safety certifications and track your hours. Contact the Training Center at 907-746-3117 to get the app.

With the current workload around Alaska and the shortage of mechanics, the Training Center is accepting mechanic applications any time at <https://aoeett.org>.

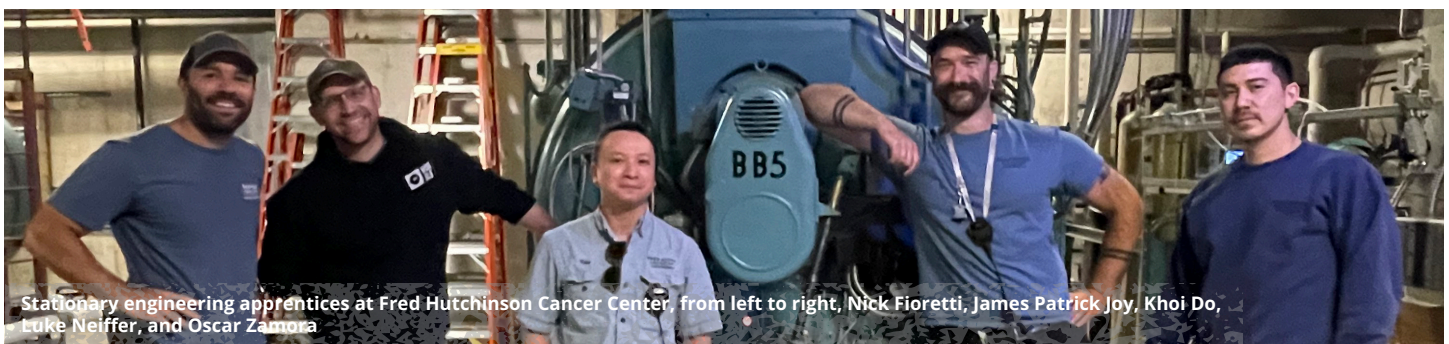


WESTERN WASHINGTON STATIONARY ENGINEERS TRAINING PROGRAM

Journeyman-level training classes or apprenticeship programs are funded by stationary employers who contribute to the Western Washington Stationary Engineers Training Trust. Whether stationary members have one year or twenty years' experience, these courses will benefit you. Stationary Engineers are needed wherever boilers, diesel engines, electric motors, refrigeration, HVACR (heating, ventilation, air conditioning and refrigeration system) operation and maintenance, PLC (programmable logic controller), building automation systems, pumps, operational systems, pools, and compressors are used in a fixed location (hence the term "stationary").

Journey-Level Upgrading: The Training Trust provides journey-level training classes to fulfill ongoing state continuing education and license requirements. Upon approval and successful completion, classes are paid or reimbursed at 100%, same with required and approved supplies at 75%.

Apprenticeship Program: During this 4-year program apprentices work with journey-level engineers for on-the-job training while completing instruction at Renton Technical College. This a great way to "earn while you learn".





MEMBER SPOTLIGHT

GERI MCPEEK

STEAM ENGINEER BY TRAINING, CURRENTLY CONTROLS SPECIALIST
SEATTLE CHILDREN'S HOSPITAL

Why did you join IUOE Local 302? How long have you been a member?

I liked how being a stationary engineer is more of a universal trade. I started as an apprentice in the 90's. It was a big learning curve. Becoming an apprentice was a huge confidence boost to learn how things work and how to fix them. I've been a member of IUOE since 2000.

What are your favorite things about being a union member?

I'm proud of being part of a Union who is improving the situation of working-class people. I really appreciate the pay, security, and being represented by a Union.

What's your current job and what do you enjoy about it?

I am a steam engineer, but my current assignment is controls specialist. The primary task over the past few years has been assisting with the software transition from Siemens Insight to Siemens Desigo which improves facility operation on many levels like management systems, controllers, and field devices. I enjoy getting to build graphics and use my steam engineer perspective to make the system useful for operators. Our system was designed by non-users and was difficult to navigate. Control sequencing is interesting to me, clicking a button and 20 things happen. My favorite part of the job is the sense of fulfillment after troubleshooting, identifying the issue, and making the fix.

What are the top things you wish you would've known when you started your career?

I wish I had started younger. At the time I was afraid to be the only female. I should have gotten over it sooner because it was fun once I started. I have faced adversity. When I would start a job, at times I faced a lot of skepticism until the crew got to know me better and saw what I could do.

What advice would you give to people considering a career in the trades?

Learn as much as you can. Keep up with new technology. Try to stay in good shape. Don't worry about what people think. Have a sense of humor. Don't take yourself too seriously. Don't be afraid to ask questions or admit to mistakes. Dip your feet into everything and then you will find the thing you love to do. That will be your specialty. It is a lot more fun coming to work when you are excited about the things you do.

Congratulations to Geri who plans to retire in December 2023! She's going to rig up her truck with solar power and satellite internet, and drive around the country. Geri, thanks for all your years of service and Local 302 membership.

FOR THE GOOD OF THE ORDER

US DEPARTMENT OF LABOR RULE HELPS RAISE AND MAINTAIN FAIR WAGES FOR IUOE MEMBERS ON FEDERAL PROJECTS

The Davis-Bacon Act is a federal law that requires contractors and subcontractors to pay their workers the local prevailing wages and fringe benefits on federal public works projects. The law was enacted in 1931 but had not been meaningfully updated in over 40 years.

In conjunction with the Biden Administration's focus on infrastructure spending, the United States Department of Labor's (DOL) final rule will allow the DOL to better administer and enforce the Act's labor standards and protect fair wages and benefits for union families.

Changes to the rule:

- Ensure federal government funds elevate labor standards for construction workers across the country.
- Protect local wage and benefit standards, allowing responsible contractors to compete for federally funded or assisted construction contracts.
- Update the prevailing wage rates to reflect the actual wages paid to workers in the local community.

- Strengthen worker protections and enforcement, including debarment and anti-retaliation provisions.
- Create new efficiencies in the prevailing wage system and make sure prevailing wage rates keep up with actual wages, which means higher wages for workers over time.

Most importantly, the new rule restores the DOL's definition of "prevailing wage" used for nearly 50 years before it was upended by the Reagan administration. It will make the prevailing wage equivalent to the wage paid to at least 30% of workers, rather than 50% of workers, in each trade in a locality.

Prior to the new rule, if most workers in each trade and locality did not earn a single wage rate, then the prevailing wage was determined by the average wage in a given trade in a locality.

This rule will help raise and maintain fair wages on federal projects for IUOE members. The new rule is effective October 2023.





2023 LOCAL 302 OFFICER ELECTION RESULTS: "WHITE BALLOT" FOR ALL INCUMBENT UNION OFFICERS

Pursuant to the IUOE Constitution and Local 302 Bylaws, an election of Local 302 union officers requires a vote of the Local membership via secret ballot, but need not be held when all incumbents are unopposed.

All incumbents were unopposed for the 2023 Local 302 election, so they were re-elected by a "White Ballot" cast on August 3, 2023. The new three-year term started September 1, 2023. View the Local 302 officers here:



THANKS TO ALL ATTENDEES AND SPONSORS OF RECENT EVENTS!



Above photo, left to right: Members Greg Przybylski, Justin Carey, Mike Carey, and Field Representative Dean Stoneburner at the annual Golf Charity Classic held at Meadow Park Golf Course in Tacoma, WA; Local 302 represents Meadow Parks members and are proud to hold the event there



Retiree Terrence Tea at the Local 302 Bothell Hall Shine and Show event



Charity Clay Shoot, Sumner, WA



Retiree Luncheon at the Bothell Hall

LOCAL 302 PROUD

MEMBER AND STAFF HIGHLIGHTS

Local 302 member Monte Pearson of Fairbanks, Alaska was invited to the state Capitol to be recognized for the First Lady's Volunteer of the Year Award. Monte does a free thawing service in the winter and has thawed over 810 frozen vehicles over 4 years. He just asks people pay it forward in their own way.

Monte also runs a holiday effort called, "Pay It Forward Magical Christmas". This season he's suggesting people donate to Santa's Helpers, a local Fairbanks, Alaska non-profit. Scan this QR code to learn more:



Left to right: Lieutenant Governor Nancy Dahlstrom, Monte Pearson, and First Lady of Alaska Rose Dunleavy



Shout out to our District 7 team for representing Local 302 in the Fairbanks, Alaska Labor Day parade.

Hockey Club Fairbanks player James Sparks, son of member Ryan Sparks, presents Field Representative Crystal Tidwell with a thank you plaque for sponsoring the team.

Local 302 donated \$500 to Hockey Club Fairbanks who placed 2nd in the 14UA Alaska State Championships.



HEALTH & WELFARE

TIPS FROM THE WELFARE & PENSION ADMINISTRATION SERVICE, INC. (WPAS)

Reciprocal Service

If you have worked in other Operating Engineers jurisdictions, the reciprocal service earned with the other signatory unions will help most members to bridge gaps of time and prevent a break in service and/or provide pro-rata vesting.

If you worked out of other Operating Engineers Locals and need the combined years/credits to get vested in a Local 302 pension plan, you should *not* wait until you retire to notify WPAS. Contacting the other Locals and getting a response may take months. Be sure to have all your reciprocal Local numbers and states worked available so WPAS can contact them.

Credits earned for hours of service with other Operating Engineers pension trusts under the International Union of Operating Engineers Pension Reciprocity Agreement may enable participants to obtain pro rata pension from the plan.

Break in Service

Each year you are employed, you will receive a statement of account. This statement will provide the following information:

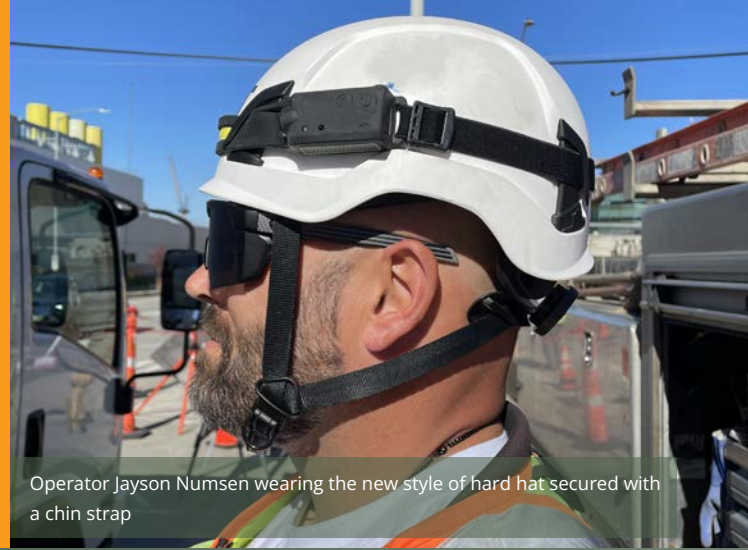
For more information visit www.engineerstrust.com (W, WA & AK) and www.wa-idengineerstrustfunds.com (E, WA & ID) or call WPAS at 1-877-441-1212.

- If you are vested (locked in a retirement benefit).
- If you are not vested, it will advise what you need to do.
- If your plan participation has terminated, and when you must return to covered employment, your benefits are not permanently forfeited.
- If you do not reinstate your benefits, it will tell you they are *permanently* forfeited.

Once your benefits are permanently forfeited, they cannot be reinstated except under certain circumstances:

- If you worked in a reciprocal Local during the period you permanently forfeited benefit, you may be able to mend the break by advising WPAS of the Local's name so they can contact them for a list of your hours and credits.
- Qualified military service for the United State as described under Uniformed Services Employment and Re-employment Rights Act (USERRA).
- Pregnancy or birth of a child.

SAFETY FIRST



Operator Jayson Numsen wearing the new style of hard hat secured with a chin strap

Construction companies veer toward new hard hat design to reduce worker injury

Some of our operators may be asked to wear a new style of hard hat secured with a chin strap. Contractors hope this will reduce the number of on-the-job injuries attributed to head trauma.

Work-related traumatic brain injury (TBI) accounts for 18% of the estimated 1.7 million TBIs that occur in the United States annually. **The construction industry faces the highest number of TBIs of any industry in the US, accounting for 25% of all work-related TBIs.**

The traditional hard hat has been around for more than 100 years and is usually secured to the head by an adjustable ring inside the shell. The problem is this hard hat can fly off the head during an accident. A hard hat secured with a chin strap will likely stay on, protect the worker's head, and reduce the risk of serious injury or death.

Yes, the new hard hats look and feel different and it's a change from the norm, but consider this new design as one more tool to bring each operator home safely to their families every night. That's something we all should support.



CONGRATULATIONS RETIREES

JUNE - AUGUST 2023

BRIAN COUPER - JUNEAU, AK
CHUCK RUSSELL - POCATELLO, ID
CORY DYKES - GRANITE FALLS, WA
CRAIG BAKER - FAIRBANKS, AK
CURTIS TEEL - NORTH POLE, AK
DANIEL LINTON - HURRICANE, UT
DANIEL SCHWEIKERT - MOUNTAIN HOME, ID
DANNY QUICK - ANCHORAGE, AK
DENNIS BURGESS - PLAINS, MT
DENNIS HUFF - ANACORTES, WA
DON BUEHLER - EDMONDS, WA
DOUG MALLETTE - COEUR D'ALENE, ID
ERIC ROBERT MCINTYRE - SPOKANE, WA
GARY POWERS - OLYMPIA, WA

GENNADIY MELNIK - PASCO, WA
GREGORY COE - ANCHORAGE, AK
JAMES LARSEN - TWIN FALLS, ID
JAMES SHAW - ANCHORAGE, AK
JAMES ZANELLI - HALFWAY, OR
JEFF WILLIAMS - AMMON, ID
JEFFREY HIGEL - SPOKANE, WA
JOHN COZARD - DAYTON, OH
JOSE MARTINEZCAMP - ROCKFORD, IL
KELLY LEIFER - MOUNT VERNON, WA
KENNETH SELK - WASILLA, AK
LEONARD STOLEN - FAIRBANKS, AK
RAMON ARRIETA - GREENACRES, WA
RAYMOND PORTER - KENNEWICK, WA
RICHARD SLATER - GRAHAM, WA

RICHARD VANDUSEN - COEUR D'ALENE, ID
ROBERT RICE - TACOMA, WA
RUSSELL HENDERSON - KAMIAH, ID
STEVEN READ - BOTHELL, WA
THOMAS PATTERSON - SPOKANE VALLEY, WA
TIMOTHY MATHEWS - WAITSBURG, WA
VERNON STOCKER - WENATCHEE, WA

IN MEMORIAM

JUNE - AUGUST 2023

IUOE LOCAL 302 MOURNS THE PASSING OF THE FOLLOWING MEMBERS

ALLEN DARLING - COLUMBIA FALLS, MT
ANTHONY HOWELL - NAMPA, ID
ANTHONY LARSEN - DILLON, MT
BEN GRIFFIN - PUYALLUP, WA
BOB PARDEW - GREEN RIVER, WY
BROOKS GAINES - ANCHORAGE, AK
CHARLES WADE - DOLORES, CO
DERYL CRAWLEY - PARKER, CO
DON HUTCHISON - BALD KNOB, AR
DONALD VOGGENTHALER - LAKE STEVENS, WA
DOUGLAS BRAGET - BREMERTON, WA
ERWIN TUCKER - CATHEDRAL CITY, CA

FREDRICK JONES - FEDERAL WAY, WA
GARY CINKOVICH - BOTHELL, WA
GENE BURNEY - NAPLES, ID
GEORGE MEYER - VALDEZ, AK
GLEN LOY - MOUNT VERNON, WA
JACOB BOOTH - ANCHORAGE, AK
JAMES SPRAGUE - GIG HARBOR, WA
JESSIE ALLINGER - FERNDALE, WA
JIM NELSON - OCEAN PARK, WA
JIMMIE BUTLER - AUBURN, WA
JOHN FERGUSON - HALFWAY, OR
JOHN NARDI - PORT ORCHARD, WA
JOHN SHERWOOD - SPOKANE, WA

LYNN JEPSEN - PRESTON, ID
MERTIN WATKINS - OCEAN SHORES, WA
PHILLIP GESNER - HOODSPORT, WA
REUBEN CORTEZ - JUNCTION CITY, OR
ROBERT GOODWIN - EMMETT, ID
STEVE HAHN - LAKE STEVENS, WA
STEVEN LIND - FEDERAL WAY, WA
THOMAS JENSEN - PORT ANGELES, WA
TIMOTHY WOLFF - PUYALLUP, WA
TROY HATLEY - WEST RICHLAND, WA
WILLIAM GRASSER - COUPEVILLE, WA
WILLIAM OBERST - BOISE, ID



TRAINING CENTERS

ELLENSBURG, WA TRAINING CENTER

www.oetraining.com | 509-968-3203

SPANGLE, WA TRAINING CENTER

www.wsopen.org | 509-235-9393

PALMER, AK TRAINING CENTER

<https://aoeett.org> | 907-746-3117

AUBURN, WA STATIONARY TRAINING CENTER

www.iuoe302.org | 253-351-0184

CALENDAR

DISTRICT MEETINGS

ALL MEETINGS CONVENE AT 7 P.M.

DISTRICT 1 – BOTHELL

1st Thursday of each month
Union Hall, 18701 120th Ave NE

DISTRICT 2 – BELLINGHAM

3rd Thursday of each month
1700 North State St

DISTRICT 3 – HOQUIAM

2nd Thursday of each month
Elks Club, 624 K St

DISTRICT 3 – SILVERDALE

3rd Wednesday of each month
Union Hall, 3525
NW Anderson Hill Rd

DISTRICT 3 – PORT ANGELES

3rd Thursday of each month
Eagles Hall Aerie No. 483,
2843 E Myrtle St

DISTRICT 4 – WENATCHEE

2nd Thursday of each month
Veterans Hall,
1206 N Wenatchee Ave

DISTRICT 4 – ELLENSBURG

2nd Wednesday of each month
Union Hall, 403 S Water St

DISTRICT 5 – BOISE

4th Tuesday of each month
IBEW Hall, 225 N 16th St

DISTRICT 5 – LEWISTON

2nd Wednesday of each month
Central Labor Council,
1618 Idaho St Suite 102

DISTRICT 5 – POCATELLO

4th Wednesday of each month
Labor Temple, 456 N Arthur St

DISTRICT 5 – SPOKANE

2nd Monday of each month
Union Hall, 510 S Elm St

DISTRICT 5 – KENNEWICK

2nd Tuesday of each month
Union Hall, 2637 W Albany Ave

DISTRICT 6 – ANCHORAGE

4th Thursday of each month
Union Hall, 4001 Denali St

DISTRICT 7 – FAIRBANKS

4th Wednesday of each month
Union Hall, 3002 Lathrop St

DISTRICT 8 – JUNEAU

4th Tuesday of each month
Union Hall, 9309 Glacier Hwy,
Suite A-105

DISTRICT 286 – AUBURN

2nd Tuesday of each month
Union Hall, 18 E St SW

NOVEMBER

11 Veterans Day

23 Thanksgiving

DECEMBER

7 Semi-Annual Meeting

7 Founding of National Union of
Steam Engineers 1896

25 Christmas

JANUARY

1 New Years Day

15 Martin Luther King Jr Day



Notice to members of Local 302 regarding rights and obligations of agency fee/financial core employees

Federal law allows workers represented by a labor union under a collective bargaining agreement that contains a union security clause to elect non-member status. Those who elect “financial core” dues payment status thereby elect non-member status. Workers who choose financial core status are known as “objectors” or “financial core payers”. That election may be made at any time. Elections may only be made by individuals. They cannot be made by groups and cannot be made on behalf of any other worker.

A worker who elects non-member status, including a financial core payer, is: 1) not permitted to attend Union meetings, including contract ratification meetings; 2) not eligible to run for Union office or vote for Union officers; 3) not eligible for an honorable withdrawal card or transfer to another Operating Engineers Local, which may result in the need to pay an initiation fee upon being transferred; 4) not eligible for certain Union benefits, such as certain

life insurance policies, that are available only to Union members.

When electing to be a “financial core” non-member, the worker is required to pay “core” dues reflecting that percentage of full dues which are attributable to representational functions. At IUOE Local 302, the percentage of full dues utilized for representational purposes is presently 92%. In other words, in exchange for losing the benefits of membership identified above is 8% off full dues.

The percentage of full dues used for representational purposes is calculated and subject to review by objectors. The number is drawn from the Union’s expenditures in performing the duties “of an exclusive representative of the employees in dealing with the employer on Labor-Management issues.” This includes expenditures for negotiations, organizing, contract enforcement such as grievance processing and arbitration, procedures before government agencies such as unfair labor practice charges and pursuit of equal rights violations, Union governance and administration, litigation, and such other activities that further the interest of the Union respect-

ing the wages, hours and working conditions of its membership. “Non-chargeable” are expenditures for community service, affiliation with non-related organizations and political contributions.

A non-member objector is entitled to challenge the mathematics that produce the “chargeable” and “non-chargeable” percentages identified above. To do so, the objector must make a written request for a full explanation of the reduced dues being charged to them. In response, the non-member objector will be provided a detailed itemization of expenditures in both categories as well as the report showing the expenditures on which the reduced fee is based.

Non-member objectors dissatisfied with the “core dues” calculation following that process may contest the calculation before an impartial arbitrator appointed by the American Arbitration Association. A portion of the objector’s fee equal to the amount which is challenged will be held in interest-bearing escrow while the objector pursues that challenge. The Federal Rules of Evidence and the Federal Rules of Civil Procedure will govern at the arbitration requested by the dissatisfied non-member objector.



**APPLY FOR
SCHOLARSHIPS
NOW:
WWW.IUOE302.ORG**

**STATIONARY MEMBERS: CHECK OUT CURRENT JOB
OPENINGS ON OUR WEBSITE WWW.IUOE302.ORG**

2023 HOLIDAY
**TOY
DRIVE**

HELP BRING JOY TO CHILDREN IN NEED

**IN KEEPING WITH TRADITION, LOCAL 302 COLLECTS AND DONATES NEW,
UNWRAPPED TOYS AND/OR CANNED FOOD TO OUR REGIONAL LABOR
AGENCIES. IF YOU'D LIKE TO CONTRIBUTE PLEASE BRING THESE ITEMS
TO YOUR HALL OR THE HOLIDAY PARTY IN YOUR DISTRICT
(NO LATER THAN YOUR HOLIDAY PARTY PLEASE)**





INTERNATIONAL UNION OF OPERATING ENGINEERS LOCAL 302

Daren Konopaski, Business Manager and International Vice President
18701 120th Avenue NE Bothell, Washington 98011-9514

Non-Profit Org.
U.S. Postage
PAID
Seattle, WA
Permit No. 12494

**A UNION BUILT ON SAFETY,
RESPECT, AND SOLIDARITY**



Local 302 Members: You take epic photos! We want to share them on our website, social media, and the Load-line. Submit your photos to mainoffice@iuoe302.org.

Photo courtesy of Local 302 member Austin Schimschat, Seattle, WA

